

Maintenance of Relay Protection and Control Devices



Maintenance of Relay Protection and Control Devices



Ensuring that protection systems operate reliably is crucial, and a good preventive maintenance program ensures that protection and relay systems function properly without causing additional problems.



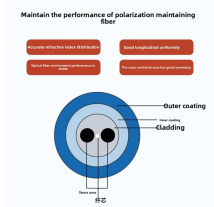
Although testing of individual components may take place on a regular basis (e.g., relay calibration and lockout relay testing), it is essential to test the entire protection circuit, including ...



Whether working in a substation or power plant, regulations from NFPA and NERC require an ongoing and systematic program to test, maintain, and document the performance of your protection scheme ...



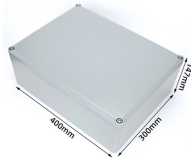
ERS provides turnkey solutions for maintaining and testing electromechanical, solid-state, and microprocessor-based relays, as well as IEC 61850 IEDs, relay panels, and distributed protection ...



The performance of protective relay is affected by maintenance. Basic requirements of sensitivity, selectivity, reliability and stability can be satisfied only if the maintenance is excellent.



1.1 Protection systems must be maintained and repaired to ensure system reliability. PG& E protection systems (including automatic reclosing and sudden pressure relaying) are maintained at the scheme ...



Periodic maintenance of protection relays is essential to ensure the reliable operation of power network transmission and distribution systems. Protection relays are critical devices that ...



ABB has developed a preventive maintenance concept for the well-established SPACOM, RE500 and Relion series relays. These relays have been in the market for more than 20 years.



Identify which maintenance method (time-based, performance-based per PRC-005 Attachment A, or a combination) is used to address each Protection System, Automatic Reclosing, and Sudden ...



To provide practical and cost-effective guidance for implementing a protective relay maintenance program. To provide techniques for evaluating and trending relay performance.

Contact Us

For more information, pricing, or custom energy solutions, please contact us:

Website: <https://www.gdroofing.co.za>

Email: sales@gdroofing.co.za

Phone: +27 72 418 9365

Address: 22 Electron Avenue, Isando, Johannesburg, 1600, South Africa

This document is for informational purposes only. Specifications subject to change without notice.

