

Materials for Lighting Distribution Boxes



Overview

Steel and aluminum are the most common metals for distribution boxes. Steel is very strong and can take hard hits. Many boxes use special materials to stop fire from spreading. Good. Steel enclosures provide excellent protection against physical impact and are also resistant to corrosion, making them suitable for harsh environments like factories or outdoor installations. Plastic Enclosures: For residential or light-duty applications, polycarbonate or fiberglass-reinforced. Electrical lighting distribution boxes are like central command centers that safely send power from the building's main electrical feeds to each lighting circuit.



Materials for Lighting Distribution Boxes



Distribution boxes are commonly made from materials like polycarbonate, fiberglass, and stainless or galvanized steel. These materials are chosen for their durability, impact resistance, and ...



This ultimate guide explains what a distribution box does, its internal components, common types, real-world applications, and how to select the right DB Box for your project.



Learn what an electrical distribution box (DB/distribution board) is, its main components (MCB/RCCB/RCBO, SPD, busbar) and common types. Includes a quick selection guide for ways, IP ...



Understanding its significance, this article covers what a distribution box is, how it functions, its structure, the various types available, and how it differs from other electrical boxes like ...



If you're sourcing high-quality options, Distribution Boxes from trusted manufacturers can help you find the right fit for your specific needs. Understanding the pros and cons of each material is ...



Choosing the right material is crucial to ensure the safety and durability of the distribution box. In specific environments, such as flammable and explosive places, the material selection of ...



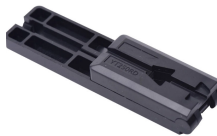
When choosing long-lasting electrical lighting distribution boxes, you need to think carefully about the technical specs, the surroundings, and how the boxes will be used in the long run.



Distribution box material options include steel, aluminum, PVC, polycarbonate, and SMC, each offering unique benefits for safety and durability.



First, the choice of material directly affects the ability of the distribution box to provide a safe enclosure for electrical connections. Metal and plastic are the most common materials used to manufacture ...



Learn which material is ideal for your LV distribution box. Axis Electricals explains how to choose the right enclosure for safety, durability, and performance.

Contact Us

For more information, pricing, or custom energy solutions, please contact us:

Website: <https://www.gdroofing.co.za>

Email: sales@gdroofing.co.za

Phone: +27 72 418 9365

Address: 22 Electron Avenue, Isando, Johannesburg, 1600, South Africa

This document is for informational purposes only. Specifications subject to change without notice.

