

Method for making 90-degree bends in cable trays



Method for making 90-degree bends in cable trays



NL8530012 12" Wide 1 90° Short Radius Bends
200 mm (8") Wide Cable Trays Required
Accessories



Learn the step-by-step process to make an internal 90 bend in cable tray. Ideal for electricians and contractors looking to enhance their skills.
#contractorsofiktok #electrical #tools.



The document provides instructions for the installation of 90° short radius bends for wire mesh cable trays in various widths (4", 6", and 12"). It lists the required accessory (NL8530012) for each width of ...



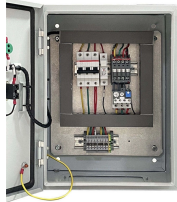
Guide for making bends, tees, crosses, risers and reducers from straight sections of wire basket cable trays live at the project.



How to make a 90 electrical cable tray bend to measurement of your choice. Great if you are new or just forgot how to do it, this easy ...



Use this guide to learn the most effective installation practices when installing Cablofil tray. Each example of bends and tee's clearly illustrate proper tray cutting combined with recommended usage ...



This is a step by set guide on how to make (fabricate) a 90 degree bend in metal cable tray and use a cable tray bending machine to make the same bend. Videos are training aids for City and Guilds (C and G) and EAL courses ...



Now you know that 160mm in 100mm cable tray will be 90°. So you can divide the 160mm by any number you want to get as many bends as you want. Eg. Divide 160mm / 8 = 20mm ...



Construction of a flat 90° bend (G) The gusset is produced by cutting a piece of tray to the required size, removing 1 lip completely and bolting it to the 90° bend (H). This completes the 90° ...



Take a 90-degree cable tray bend elbow as an example, and apply the same principles for 45-degree bends accordingly. The length of the bottom side (bottom diagonal) after bending the cable tray ...

Contact Us

For more information, pricing, or custom energy solutions, please contact us:

Website: <https://www.gdroofing.co.za>

Email: sales@gdroofing.co.za

Phone: +27 72 418 9365

Address: 22 Electron Avenue, Isando, Johannesburg, 1600, South Africa

This document is for informational purposes only. Specifications subject to change without notice.

