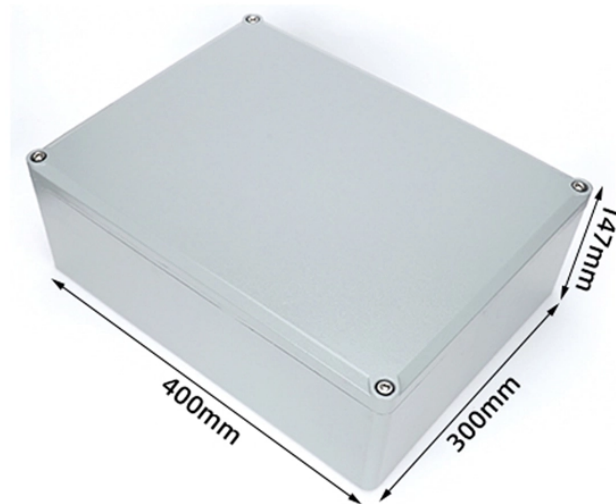


Method for removing the small busbar at the top of the screen



Overview

Right-click your desktop, choose Personalize. At the bottom, click background. If that's not the cause, you might also make sure you're using the full resolution of your monitor. When the protection or measurement and control device is transformed and the whole screen is replaced, the screen cabinet needs to be removed. ostensibly to maximize them or choose side by side. Remove the panel cover screws from the electrical panel and carefully remove the panel, exposing the internal wiring. There will be multiple white and copper wires attached to them., overheating of a circuit breaker. Does heat related discoloration cause any degradation to the busbar. WATCH THE NEW VERSION How to get rid of search bar at of screen | Windows 10 8 7 | 3 ways | No white gap | No black gap • How to get rid of search bar at of screen.

Method for removing the small busbar at the top of the screen



The invention relates to a demounting auxiliary tool for substation screen-top miniature bus and an application method of the demounting auxiliary tool, relates to the technical field of tools, and solves ...



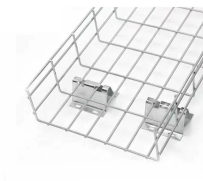
Your ultimate guide to busbar processing and installation is here. From beginner to expert, we cover everything you need to know in this mechanical field.



Remove all of the labeled wires from the bus bar using a Philips screwdriver. Remove the mounting screws on each end of the bus bar and remove it from the panel. Remember the orientation of the ...



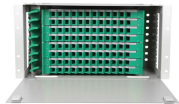
This tutorial will show you how to enable or disable showing snap layouts when dragging a window to the top of the screen for your account in Windows 11. The Snap windows feature in ...



This electrical method statement covers the installation of bus bar electrical assemblies. Following this procedure shall ensure that the installation has been carried out as per contract requirements and ...



The breakers have DIN rail clips on the bottom and the bus bar "floats" on the breakers. So in practice typically I'll mount one big incoming 3 phase 480 V breaker, then connect this to a bus ...



Stay updated with the latest news and stories from around the world on Google News.



The PowerLine C can remove a 30 mm length of 0.5 mm thick polyamide from both sides of a 6 mm wide busbar in about 6 seconds. Insulation removal is complete without any damage to the ...



Go to your desktop icon screen and right click. Choose "Graphic Options", "Panel Fit", and put a check mark next to "Scale Full Screen". That should remove the black bars across your ...



How do i get rid of the toolbar at the top of my screen? How do i get the toolbar off the top of my screen?

Contact Us

For more information, pricing, or custom energy solutions, please contact us:

Website: <https://www.gdroofing.co.za>

Email: sales@gdroofing.co.za

Phone: +27 72 418 9365

Address: 22 Electron Avenue, Isando, Johannesburg, 1600, South Africa

This document is for informational purposes only. Specifications subject to change without notice.

