

Mobile Fiber Optic Terminal Box Replacement Settings



Overview

This user manual provides step-by-step instructions and usage information, including the required installation tools and accessories. Ensure a secure installation with enough buffer size for optimal performance. Get the most out of your optic terminal box with this. A fiber termination box is the standard instrument used in fiber optic networks to connect, secure, and protect optical fibers at the terminating point. It functions as a junction between the incoming fiber cable and the outgoing customer-side fiber cable, where one fiber can be spliced, patched. From mission-critical surveillance systems and telecommunications to enterprise data centers and Fiber-to-the-Home (FTTH) applications, optical fiber offers unparalleled speed and low signal attenuation over long distances. Prepare the cable according to the design of the opened box.

Mobile Fiber Optic Terminal Box Replacement Settings



Learn how to install your TELUS fiber optics Optik Network Terminal (ONT) with these step-by-step instructions.



By understanding the types, installation steps, and maintenance practices, beginners can embark on the journey of building and sustaining reliable ...



Fiber termination box is an essential component in fiber optic communication systems that facilitates the routing and protection of fiber optic cables. The following steps provide a detailed ...



Learn everything about fiber termination boxes—types, installation steps, and maintenance tips to ensure reliable fiber optic network performance.



Usually it's 1 connector for the fiber optic connector. The fiber optic cable is very sensitive to mechanical torsion and should never be bent too tight. Loose coils are fine.



Proper installation and maintenance of fiber optic termination boxes is critical to ensuring the reliability, performance and longevity of your fiber optic network.



This user manual provides step-by-step instructions and usage information, including the required installation tools and accessories. Ensure a secure installation with enough buffer size for optimal ...



By understanding the types, installation steps, and maintenance practices, beginners can embark on the journey of building and sustaining reliable fiber optic networks with confidence.



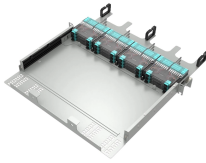
A Fiber Termination Box, also known as an optical termination box (OTB), is a compact, specialized enclosure designed for the organization, termination, splicing, and protection of fiber optic ...



In this blog, we will discuss the two types of fiber optic cables and the role of a simple yet essential piece of equipment in the fiber laying procedure—the, the Fiber Termination Box, or FTB.



Fiber termination box is an essential component in fiber optic communication systems that facilitates the routing and protection of fiber optic ...



A fiber optic termination box is an enclosure designed to terminate incoming optical fiber cables and distribute optical signals to drop cables or patch cords. It integrates fiber splicing, adapter ...

Contact Us

For more information, pricing, or custom energy solutions, please contact us:

Website: <https://www.gdroofing.co.za>

Email: sales@gdroofing.co.za

Phone: +27 72 418 9365

Address: 22 Electron Avenue, Isando, Johannesburg, 1600, South Africa

This document is for informational purposes only. Specifications subject to change without notice.

