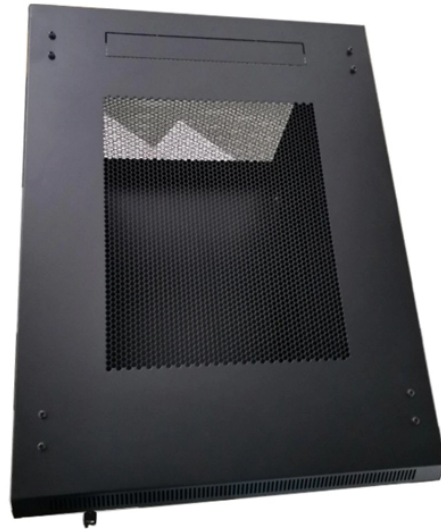


National Inspection Construction Site Power Distribution Box



National Inspection Construction Site Power Distribution Box



Sections 1926.402 through 1926.408 contain installation safety requirements for electrical equipment and installations used to provide electric power and light at the jobsite.



Describes 13 deaths that occurred in six separate incidents when workers erected or moved scaffolds that came into contact with energized, overhead power lines, or when they contacted overhead ...



Keep your job site running smoothly with our selection of power distribution centers.



Exception No. 2: On construction sites, a box is not required for GFCI-protected branch circuits that are permanently installed in framed walls and ceilings and are used to supply temporary power or lighting.



Get answers to common questions about temporary wiring in construction, based on rules from the Occupational Safety and Health Administration (OSHA).



All 120-volt, single-phase, 15- and 20-ampere receptacles shall be of the grounding type and their contacts shall be grounded by connection to the equipment grounding conductor of the circuit ...



In this article, we will provide a basic overview of Article 590, highlighting its key principles and why compliance is crucial for safety, whether at a construction site, a special event, or any other ...



The requirements of Article 590 apply to temporary power and lighting installations and removals, including power for construction, remodeling, maintenance, repair, demolition, and decorative lighting.



Follow these steps to ensure proper safety procedures are met when working with or around temporary power. GFCI protection is required for all 125-volt, 15-, 20-, and 30-ampere receptacle outlets. Listed ...



Ensure NEC & OSHA compliance with your temporary jobsite power setup using a reliable industrial portable power station.

Contact Us

For more information, pricing, or custom energy solutions, please contact us:

Website: <https://www.gdroofing.co.za>

Email: sales@gdroofing.co.za

Phone: +27 72 418 9365

Address: 22 Electron Avenue, Isando, Johannesburg, 1600, South Africa

This document is for informational purposes only. Specifications subject to change without notice.

