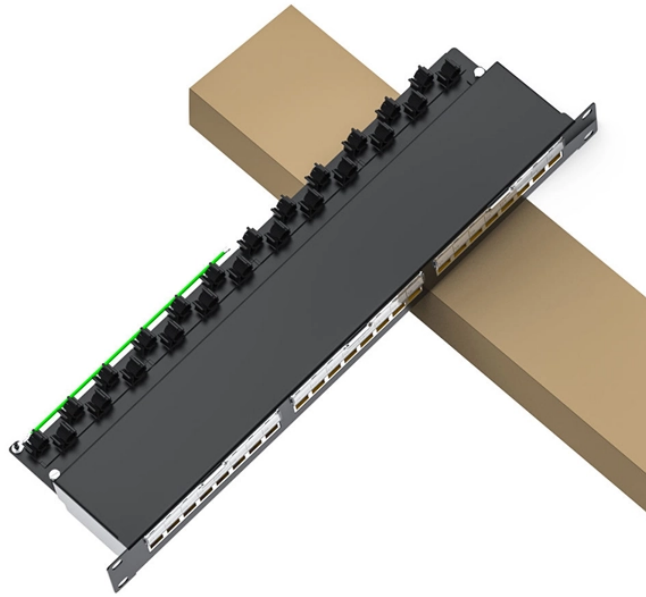


National Standard for Optical Cable Connector Loss



National Standard for Optical Cable Connector Loss



These standards focus on things like connector geometry, ferrule cleaning, and insertion loss testing. They use specific procedures, such as the TIA-455 series, to make sure products work ...



Optical Loss Test Set (OLTS) Tester comprised of fiber optic power meter and test source used to test the loss of components or cable plants. It may be two instruments or a combination of the two in one ...



This provides the tester with the ability to accurately measure the connector loss, connector back reflectance and the adjacent splice loss on a short span (15-30 meters from terminating distribution ...



This standard describes procedures for installing and testing cabling networks that use fiber optic cables and related components to carry signals for communications, security, control and similar purposes.



Unless directed by the owner or other agency that unused cables are reserved for future use, remove abandoned optical fiber cable (cable that is not terminated at equipment other than a connector and ...



Loss (IL) and Reflection or Return Loss (RL). A superior connector will exhibit minimal optical loss, thanks to precise alignment of th. connected fiber cores and enhanced stability. In essence, the ...



National Electrical Installation Standards™ are designed to improve communication among specifiers, purchasers, and suppliers of electrical construction services.



Unless the cable manufacturer's recommendation is more stringent, the minimum bending radius shall be 10 times the cable diameter for copper cables and 20 times the cable diameter for fiber optic cables.



AN AMERICAN NATIONAL STANDARD NECA/FOA 301-2016 Standard for Installing and Testing Fiber Optics



important. The OTDR trace can be used for cable acceptance, splice and connector loss, documentation, troubleshooting, fault location, optical return loss, and to measure the length of PM ...



10.3.1 All completed flight cable assemblies shall be tested to ensure that measured optical performance (e.g., insertion loss or return loss) meets or exceeds the performance requirements in the ...



This standard covers fiber optic cabling installed indoors (premises installations) with the addition of outside plant (OSP) applications involved in campus installations where the fiber optic cabling ...

Contact Us

For more information, pricing, or custom energy solutions, please contact us:

Website: <https://www.gdroofing.co.za>

Email: sales@gdroofing.co.za

Phone: +27 72 418 9365

Address: 22 Electron Avenue, Isando, Johannesburg, 1600, South Africa

This document is for informational purposes only. Specifications subject to change without notice.

