

Network Hub and Core Switch



Network Hub and Core Switch



Comprehensive guide to Core, Distribution, and Access Switches. Roles in the network and important parameters explained.



This guide breaks down exactly what a core switch does, how it fits into the three-tier network model, and the exact device-count thresholds that dictate when your business actually ...



Learn how Layer 2 network devices evolved from hubs to modern switches, and how they manage traffic, reduce collisions, and scale in enterprise networks.



While both core and normal switches play crucial roles in maintaining efficient data flow, their functionality and applications vary significantly. This guide unpacks the core differences, helping ...



A hub is a simple network that transmits data to all the connected devices while on the other hand a switch is more advanced as it forwards data to particular devices based on the MAC ...



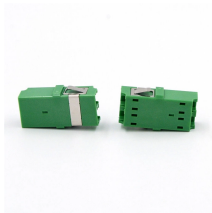
This tutorial explains the differences between Network Hub VS Network Switch. Understand the differences along with working principles, applications, demerits, etc:



Both hubs and Ethernet switches serve as connection points for computers and other devices, but their core functions differ significantly. These differences influence performance, ...



Learn about the differences between two common network devices: hubs and switches. Explore features of each, common uses, and how they compare.



What is the difference between an ethernet switch and a network switch, hub and router? Find out how to decide which is best for your needs.



Explore the core switch's role as the backbone of your network. Discover key differences, uses, and insights into layer 3 core switch technology.

What You Need to KnowThe Ethernet SwitchHubWhat's The difference?Which Is Better For Me?ConclusionA switch is just a more powerful version of a hub. If your home network contains four or more computers, or if you wish to utilize your home network for activities that create considerable quantities of network traffic, such as multiplayer gaming or extensive music file sharing, a switch is preferable over a hub. Hubs use a broadcast approach in te...See more on techreviewadvisor

```
.b_imgcap_alttitle p strong,.b_imgcap_alttitle .b_factrow
strong{color:#767676}#b_results .b_imgcap_alttitle{line-height:22px}.b_imgcap_altit
le{display:flex;flex-direction:row-reverse;gap:var(--mai-smtc-padding-card-nested-
default)}.b_imgcap_alttitle .b_imgcap_img{flex-shrink:0;display:flex;flex-
direction:column}.b_imgcap_alttitle .b_imgcap_main{min-
width:0;flex:1}.b_imgcap_alttitle .b_imgcap_img>div,.b_imgcap_alttitle .b_imgcap_img
a{display:flex}.b_imgcap_alttitle .b_imgcap_img img{border-radius:var(--mai-smtc-
corner-card-default)}.b_hList img{display:block}.b_imagePair ner
img{display:block;border-radius:6px}.b_algo .vttv2 img{border-radius:0}.b_hList
.cico{margin-bottom:10px}.b_title .b_imagePair> ner,.b_vList>li>.b_imagePair>
ner,.b_hList .b_imagePair> ner,.b_vPanel>div>.b_imagePair> ner,.b_gridList
.b_imagePair> ner,.b_caption .b_imagePair> ner,.b_imagePair>
ner>.b_footnote,.b_poleContent .b_imagePair> ner{padding-bottom:0}.b_imagePair>
ner{padding-bottom:10px;float:left}.b_imagePair.reverse>
ner{float:right}.b_imagePair .b_imagePair:last-child:after{clear:none}.b_algo .b_title .
b_imagePair{display:block}.b_imagePair.b_cTxtWithImg>*{vertical-
align:middle;display:inline-block}.b_imagePair.b_cTxtWithImg>
ner{float:none;padding-right:10px}.b_imagePair.square_s>
ner{width:50px}.b_imagePair.square_s{padding-left:60px}.b_imagePair.square_s>
ner{margin:2px 0 0 -60px}.b_imagePair.square_s.reverse{padding-left:0;padding-
right:60px}.b_imagePair.square_s.reverse> ner{margin:2px -60px 0
0}.b_ci_image_overlay:hover{cursor:pointer}
sightsOverlay,#OverlayIFrame.b_mcOverlay sightsOverlay{position:fixed;top:5%;left:
5%;bottom:5%;right:5%;width:90%;height:90%;border:0;border-radius:15px;margin:0
;padding:0;overflow:hidden;z-index:9;display:none}#OverlayMask,#OverlayMask.b_
mcOverlay{z-index:8;background-color:#000;opacity:.6;position:fixed;top:0;left:0;wid
th:100%;height:100%}p>.news_dt{color:#767676}Versitron
```

Contact Us

For more information, pricing, or custom energy solutions, please contact us:

Website: <https://www.gdroofing.co.za>

Email: sales@gdroofing.co.za

Phone: +27 72 418 9365

Address: 22 Electron Avenue, Isando, Johannesburg, 1600, South Africa

This document is for informational purposes only. Specifications subject to change without notice.

