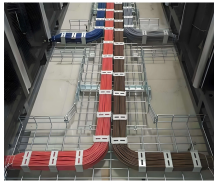


New Data Center Interconnect Integrated Container Rack



New Data Center Interconnect Integrated Container Rack



This paper describes the Intel® Rack Scale Design (Intel® RSD) hyperscale reference architecture, an open, interoperable approach to composable disaggregated infrastructure (CDI), the technology on ...



Following the growing applications for edge computing, Delta is introducing a new generation of Containerized Data Center Solutions with flexible power and cooling designs, quick deployment and ...



Marvell's \$3.8 billion acquisitions of Celestial AI and XConn target optical interconnects and CXL switching for next-gen AI infrastructure, challenging Broadcom's dominance.



The AMD “Helios” AI rack is built on the blueprint of open design submitted by Meta at OCP 2025 to enable optimized, deployable performance across AI data centers.



XPO represents a new class of optical pluggable module designed specifically for next-generation AI data center fabrics. Each XPO module delivers 12.8Tbps of bandwidth using 64 electrical lanes and ...



His presentation will showcase the latest innovations and developments in open, Scale-up Ethernet networking and roadmap for in-rack, inter-rack, and inter-data center connectivity - ...



NVIDIA's next-generation AI compute rack architecture indicates that future GPU designs will increasingly prioritize higher chip-to-chip interconnect density and faster data transmission, ...



Our IT solutions are based on high-performance network and server racks in all sizes - from standalone rack applications to fully configured data centers.



Discover the major industry shift at OFC 2026 as Arista Networks and global leaders unveil the XPO MSA, Open CPX, and OCI MSA to solve AI data center bandwidth and liquid-cooling ...



The same applies inside the data center, where cooling, connectivity, and electrical design are all being rethought as integrated systems rather than standalone components. The ...



Schneider Electric's new line of solutions equips customers with integrated, data-validated, and easily scaled white space solutions that address new challenges in pod and rack ...



A push to build more complete, rack-scale AI inference systems is driving d-Matrix's acquisition of GigaIO's data center business. The deal adds interconnect technology and systems ...

Contact Us

For more information, pricing, or custom energy solutions, please contact us:

Website: <https://www.gdroofing.co.za>

Email: sales@gdroofing.co.za

Phone: +27 72 418 9365

Address: 22 Electron Avenue, Isando, Johannesburg, 1600, South Africa

This document is for informational purposes only. Specifications subject to change without notice.

