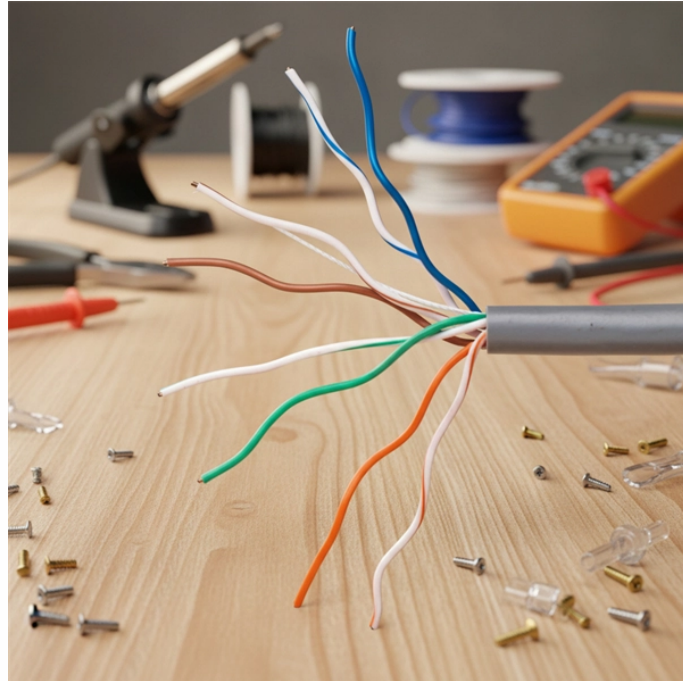


## Niger 10G Optical Module



## Niger 10G Optical Module



XFP (10GB Small Form-factor Pluggable) optical module: "X" is the abbreviation of Roman numerals 10, all XFP modules are 10G optical module. The XFP optical module supports LC fiber ...



10G SFP+ transceivers are compliant with IEEE802.3ae, SFF-8083, SFF-8472 and SFF-8431, SFF-8461, with features of Low Power Consumption. They are designed for applications of Data Centers, ...



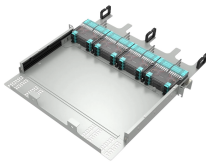
10GBASE-LR is a 10-gigabit Ethernet optical standard that operates at 1310 nm over single-mode fiber (SMF), supporting link distances of up to 10 km.



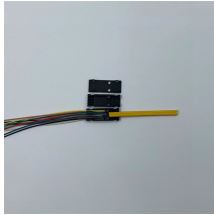
The XG-SFP-LR-SM1310 is aligned to IEEE 10GBASE-LR optical specifications and supports a link length of up to 10 kilometers over a single-mode fiber (SMF) with an LC connector.



FS 10GbE SFP+ module solutions provide a wide variety of 10 Gigabit Ethernet connectivity options for data centers, enterprise wiring closets, Internet Service ...



Juniper's portfolio of qualified 10G and 1G optical transceivers are low-cost multipurpose modules available in footprint-optimized form factors for deployment across ACX, EX, MX, PTX, and QFX ...



Optcore 10G SFP+ transceivers are suitable for 10G Ethernet and fiber channel connectivity. They comply with IEEE802.3ae, SFF-8472, SFF-8431, SFF-8461, CE and RoHS.



By deeply understanding the differences and performance of LRM, SR, LR, ER, and ZR optical modules, we can make the right choice among many optical modules, thereby building an ...



Upgrade networks with our optical transceiver sfp+ 10g single mode module 1310nm 10km lc. This LC transceiver delivers effortless 10km connectivity for data centers and servers.



The 10G electrical port module is an electro-optical conversion module packaged in SFP+ form factor, with an RJ45 interface. It is usually used with Cat6A or Cat7 network patch cords, ...

## Contact Us

For more information, pricing, or custom energy solutions, please contact us:

Website: <https://www.gdroofing.co.za>

Email: [sales@gdroofing.co.za](mailto:sales@gdroofing.co.za)

Phone: +27 72 418 9365

Address: 22 Electron Avenue, Isando, Johannesburg, 1600, South Africa

This document is for informational purposes only. Specifications subject to change without notice.

