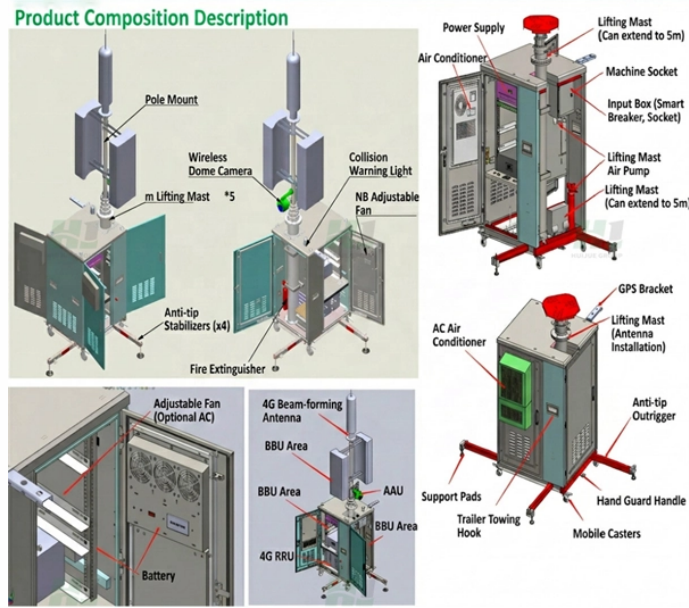


# GDR Telecom Site Energy Systems

## Norway Cold Aisle IP68

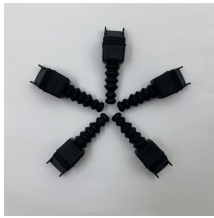


### Overview

The hot and cold aisles in the data center are part of an energy-efficient layout for server racks and other computing equipment. The goal of a hot/cold aisle configuration is to manage airflow in a way that c.



## Norway Cold Aisle IP68



Adaptable to hot and cold aisle containment, the Vertiv Aisle Containment system allows you to deploy containment before or after racks are installed to simplify installation and speed deployment of new ...



Door Options A choice of door options is available for use with the aisle containment system to provide the right combination of safety and security. Dual sliding doors or Vertical doors can be chosen for ...



A modular kit of adjustable beams that connects aisle containment frame end kits and supports clear roof panels in an aisle containment system designed to optimize cool airflow between rows of rack ...



Cool Shield Aisle containment solutions reduces server row temperatures in active data centers. Learn more about the benefits of hot and cold containment.



**BENEFITS OF DATA CENTER HOT & COLD AISLE CONTAINMENT ZONE.** Energy Cost Reduction: Lower energy consumption and operational costs through targeted cooling strategies. Improved ...



Discover how hot and cold aisle containment improves cooling efficiency, cuts energy costs, and supports uptime in modern data centres.



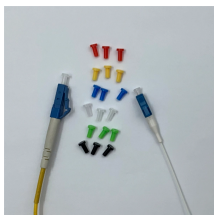
Our aisle containment systems are vendor agnostic, featuring innovative, transparent panels that are lightweight and easily attached horizontally or vertically to cabinets using a universal rail system.



Data centers with a hot/cold aisle system tend to be more energy-efficient than those without it. The system manages airflow and minimizes overheating, helping to lower cooling costs ...



Modular sliding or swinging door versions available with optional "soft" self-closing mechanisms and hold-open provisions. Accommodates aisle widths from 36" wide to 96" wide. Standard ...



By isolating the cold aisle, containment reduces unintended mixing of cold supply air with hot exhaust air, maintaining uniform, predictable temperatures across all racks.



Modular designed frame made of cold roll steel, with thickness  $\geq 1.2\text{mm}$  to ensure the firmness and security. Aisle containment in the data center requires that cabinets are aligned in a hot aisle/cold ...

## Contact Us

For more information, pricing, or custom energy solutions, please contact us:

Website: <https://www.gdroofing.co.za>

Email: [sales@gdroofing.co.za](mailto:sales@gdroofing.co.za)

Phone: +27 72 418 9365

Address: 22 Electron Avenue, Isando, Johannesburg, 1600, South Africa

This document is for informational purposes only. Specifications subject to change without notice.

