

## GDR Telecom Site Energy Systems

# Norway Telecom Shelter IK10



## Norway Telecom Shelter IK10



Nkom has prepared a draft guide to help building owners and tenants who struggle with poor coverage in their buildings. This received 18 public comments. In its submission, Telenor said ...



If protection higher than IK10 is achieved, the designation is "IK10+", regardless of the additional energy influence, whereby the standard recommends a value of 50 J (joules).



These lightweight modular shelters are ideal for rooftop and remote locations, and their factory test assembly ensures easy and trouble-free field assembly. Shipped in knock-down configuration, they ...



Our concrete and steel shelters are engineered with flexibility in the design phase to allow for domestic or international shipments. The shelters can be concrete, steel, or include both steel and concrete ...



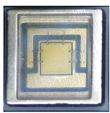
Whether you need to protect sensitive telecom equipment from harsh weather or secure critical infrastructure in remote locations, Enviro Buildings® telecom shelters provide the ideal solution.



This guide explains the IK rating system, from IK01 to IK10, and why IK10 represents the highest vandal resistance available. Understanding these ratings ensures you select the right ...



At its core, an IK rating indicates the level of physical impact an enclosure can endure before its functional integrity is lost. The system, codified under IEC 62262, ranges from IK00 (no protection) to ...



What is IK10? Read our engineering guide on IEC 62262 impact ratings. Learn how 20 Joules of vandal resistance is calculated and why IK10 cabinets are mandatory for outdoor telecom sites.



As a provider of public electronic networks or services, you have a duty to register your activities with Nkom. As a provider of electronic communications services, you are subject to various duties. Here ...

## Contact Us

For more information, pricing, or custom energy solutions, please contact us:

Website: <https://www.gdroofing.co.za>

Email: [sales@gdroofing.co.za](mailto:sales@gdroofing.co.za)

Phone: +27 72 418 9365

Address: 22 Electron Avenue, Isando, Johannesburg, 1600, South Africa

This document is for informational purposes only. Specifications subject to change without notice.

