

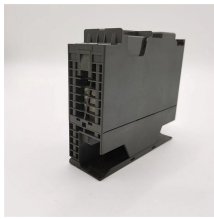
## Obstructing the entrance electrical distribution box



## Obstructing the entrance electrical distribution box



Find out how to properly wire an electrical panel box with a comprehensive diagram and step-by-step instructions.



Reliable cable distribution boxes ensure safe, efficient power management for residential, commercial, and industrial systems. Learn installation and safety tips.



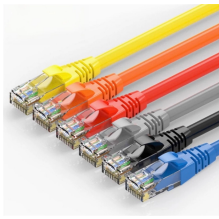
Whether you are an electrical contractor or a construction brigade, knowing how to properly and safely install distribution boxes is the basis of ensuring the safe operation of the entire ...



For large equipment that contains overcurrent devices, switching devices, or control devices, there shall be one entrance to and egress from the required working space not less than 610 mm (24 in.) wide ...



Learn how to install a distribution box safely and correctly. Covers wiring, placement, standards, and expert tips for a compliant setup.



Obstructing electrical panels can lead to dangers such as arc flash, unintentional fires, and delays in electrical emergency responses. Placing carts and flammable materials in front of...



Discover the mandatory dimensions and access rules for your home's electrical panel to ensure safety and compliance with electrical codes.



At least one entrance not less than 24 inches (610 mm) wide and 6 feet 6 inches (1.98 m) high shall be provided to give access to the working space about electric equipment.



Keeping the panel clear of debris and obstructions is crucial to ensuring the safety of your electrical system. It protects overloading circuits and serves as a central hub where all the wires from your ...



Property owners generally do not have the right to obstruct or permanently cover utility equipment, even on their land. Utility companies maintain a legal right to unimpeded access for ...

Introduction Understanding The Components of A Distribution Box Selecting The Right Distribution Box Site Preparation and Location Requirements Electrical Connections and Wiring Compliance with Standards and Regulations Conclusion What Is a

Distribution Box? A distribution box, also known as a power distribution unit, is a critical component in any electrical system. It is the control center for electricity in your home or business. It takes the electrical power coming into the building and distributes it to different circuits. Each circuit then powers various device... Why Proper Installation Matters Installing a distribution box correctly is about more than just making sure the lights turn on. It's about safety, efficiency, and reliability. A poorly installed distribution box can lead to a host of problems. These include electrical fires, short circuits, and even complete power failures. Proper installation ensures tha...

See more on eabel Published: Feb 7, 2025.

```
.rcimgcol .cico { background: #f5f5f5; } .b_drk .rcimgcol .cico, .b_dark .rcimgcol .cico { background: unset; } .b_imgSet .b_hList li.square_m, .b_imgSet .b_hList li.tall_m { width: 75px; } .b_imgSet .b_hList li.tall_m, .b_imgSet .b_hList li.tall_m, .b_imgSet .b_hList li.tall_m, .b_imgSet .b_hList li.wide_m { width: 128px; } .b_imgSet .b_Card .b_hList li { padding-left: 1px; padding-right: 9px; } .b_imgSet .b_Card .b_hList li.tall_wfn { width: 80px; padding-right: 6px; } .b_imgSet .b_Card .b_hList li:last-child { padding-right: 1px; } .b_imgSet .b_Card .b_imgSetData { padding: 0 8px 8px; height: 40px; } .b_imgSet .b_Card .b_imgSetItem { box-shadow: 0 0 1px rgba(0,0,0,.05), 0 2px 3px 0 rgba(0,0,0,.1); border-radius: 6px; overflow: hidden; } .b_imgSet .b_imgSetData p a { color: #444; outline-offset: 0; } .b_subModule .b_clearfix .b_mhdr .b_floatR .b_moreLink, .b_subModule .b_clearfix .b_mhdr .b_floatR .b_moreLink:visited, .b_subModule > .b_moreLink, .b_subModule > .b_moreLink:visited { color: #767676; } .b_imgSet .cico .b_placeholder { display: flex; justify-content: center; background-color: #f5f5f5; background-clip: content-box; } .b_imgSet .cico .b_placeholder a { display: flex; } .b_imgSet .cico .b_placeholder a img { width: 48px; height: 48px; margin: auto; } @media (max-width: 1362.9px) { #b_context .b_entityTP .b_imgSet li:nth-child(5) { display: none; } .b_imgSet .b_hList li.wide_m:nth-child(3) { display: none; } } @media (max-width: 1274.9px) { #b_context .b_entityTP .b_imgSet li:nth-child(4) { display: none; } .b_imgSet .b_hList li.wide_m:nth-child(2) { display: none; } } .rcimgcol .b_imgSet { content-visibility: auto; contain-intrinsic-size: 1px 124px; } .rcimgcol { height: 108px; padding-top: var(--smtc-gap-between-content-x-small); padding-bottom: var(--smtc-gap-between-content-x-small); } .b_algo:has(.b_agh) .rcimgcol { padding-top: var(--smtc-gap-between-content-xx-small); } .rcimgcol .b_imgSet { overflow: hidden; } .rcimgcol .b_imgSet ul { overflow-x: auto; overflow-y: hidden; white-space: nowrap; padding-left: 0; } .rcimgcol .b_imgSet ul::-webkit-scrollbar { -webkit-appearance: none; } .rcimgcol .b_imgSet .b_hList > li { padding-right: var(--smtc-padding-ctrl-text-side); } .rcimgcol .b_imgSet .cico { border-radius: unset; } .rcimgcol .b_imgSet .b_hList > li:first-child .cico, .rcimgcol .b_imgSet .b_hList > li:first-child .cico a { border-radius: unset; border-top-left-radius: var(--mai-smtc-corner-card-default); border-bottom-left-radius: var(--mai-smtc-corner-card-default); overflow: hidden; } .rcimgcol .b_imgSet .b_hList > li:last-child .cico, .rcimgcol .b_imgSet .b_hList > li:last-child .cico a { border-radius: unset; border-top-right-radius: var(--mai-smtc-corner-card-default); border-bottom-right-radius: var(--mai-smtc-corner-card-default); overflow: hidden; } .rcimgcol .rcimgcol .b_sideBleed { margin-left: unset; margin-right: unset; } .rcimgcol .b_imgclgovr { cursor: pointer; } .rcimgcol .b_imgclgovr .cico img: hover { transform: scale(1.05); transition: transform .5s
```

```
ease}#b_content #b_results>.b_algo .b_caption:has(.rcimgcol){padding-right:var(--mai-smtc-padding-card-default);margin-right:calc(-1*var(--mai-smtc-padding-card-default));margin-left:calc(-1*var(--mai-smtc-padding-card-default));padding-left:var(--mai-smtc-padding-card-default)}.rcimgcol .b_imgSet .b_hList .cico a{display:flex;outline-offset:-2px}.rcimgcol .b_hList>li{position:relative;padding-bottom:0}.rcimgcol .b_hList>li .iacf_smol{pointer-events:none;border-top-right-radius:var(--mai-smtc-corner-card-default);border-bottom-right-radius:var(--mai-smtc-corner-card-default);white-space:normal}.rcimgcol .b_hList .cico{margin-bottom:0}.iacf_smol{display:flex;justify-content:center;align-items:center;gap:var(--smtc-gap-between-content-xx-small);width:100%;height:100%;background:rgba(0,0,0,.6);position:absolute;left:0;top:0;color:var(--mai-smtc-foreground-ctrl-on-image-rest);font:var(--bing-smtc-text-global-body2-strong);flex-wrap:wrap;align-content:center;text-align:center}.iacf_smol:hover{text-decoration:underline}.iacfmit[data-nohov].iacfimgc .cico img{transform:none}wiringmaster
```

## Contact Us

For more information, pricing, or custom energy solutions, please contact us:

Website: <https://www.gdroofing.co.za>

Email: [sales@gdroofing.co.za](mailto:sales@gdroofing.co.za)

Phone: +27 72 418 9365

Address: 22 Electron Avenue, Isando, Johannesburg, 1600, South Africa

This document is for informational purposes only. Specifications subject to change without notice.

