

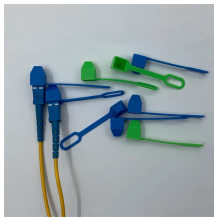
On-site fabrication of fiberglass cable trays at bends



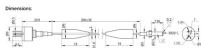
On-site fabrication of fiberglass cable trays at bends



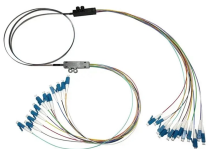
This specification is intended for finalization of contract between BHEL PEM and Bidder for FRP Cable trays & Accessories. Standard technical detail as indicated in the specification shall be agreed upon ...



Enduro fiberglass cable ladder tray is designed specifically to endure the harshest environments and increase operational safety. Our products undergo world-class, on-site, comprehensive testing to ...



Fiberglass cable tray 90 degree vertical inside bend assembly submittal. Powering Business Worldwide. WIDTH NOMINAL RAIL HEIGHT 90° NOMINAL RADIUS. 4 F - 18 - 90 VI 12.



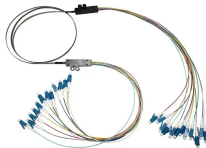
Technical specifications for FRP cable tray refurbishment, including supply, erection, and cable re-laying. Compliant with NEMA FG-1 & ASTM standards.



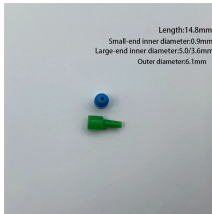
To install the cable tray supports, first find the required elevation from the floor to the bottom of the cable tray and establish a level line with a laser or a nylon string.



This document is a functional specification for fiberglass reinforced plastic (FRP) cable trays for a well platform project. It specifies requirements for FRP cable trays, accessories, fittings and hardware.



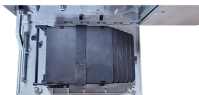
This process offers speed and consistency - making it the best method for producing high-volume linear fiberglass products that require constant cross sections.



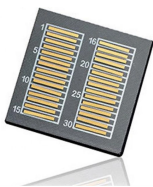
FRP Cable Tray 90 Degree Bend | Electrical Cable Tray Fabrication Work Horizontal FRP cable tray bend formula and installationmore



Guide for making bends, tees, crosses, risers and reducers from straight sections of wire basket cable trays live at the project.



The purpose of this article is to define the sequence and methodology for the installation of electrical cable trays, cable trunking, cable raceways and boxes, ...



What is fiberglass cable tray FRP cable tray, also known as GRP tray, is a durable support system made from advanced resin and fiberglass reinforcement, designed to manage and protect cables from ...

Contact Us

For more information, pricing, or custom energy solutions, please contact us:

Website: <https://www.gdroofing.co.za>

Email: sales@gdroofing.co.za

Phone: +27 72 418 9365

Address: 22 Electron Avenue, Isando, Johannesburg, 1600, South Africa

This document is for informational purposes only. Specifications subject to change without notice.

