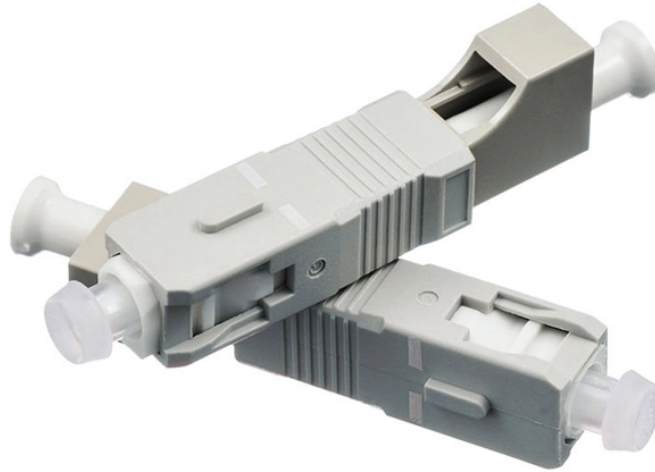


Optical attenuation of 20Hz in the beam splitter



Optical attenuation of 20Hz in the beam splitter



Uneven splitter ratios and losses A very frequent question is how the splitter ratio in an optical splitter relates to the actual signal gain. In other words, how much attenuation a splitter ...



The reflectance diagram indicates that the non-polarizing beamsplitter cube splits the incident beam independently of polarization within the operating wavelength range of approximately 525 nm to 575 ...



What are Beam Splitters? A beam splitter (or beamsplitter, power splitter) is an optical device which can split an incident light beam (e.g. a laser beam) into two (or sometimes more) beams, which may or ...



Papers delve into the materials used in beam splitter fabrication, including optical coatings and substrates, and how these materials impact efficiency, wavelength performance, and durability.



Laser damage threshold, wavefront distortion, and mounting stress are the three most common sources of beam splitter failure or underperformance in real optical systems.



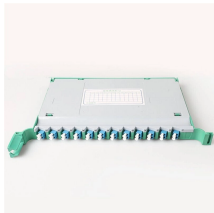
Moreover, the beam splitter could be used as a source of quantum entangled photons and be the basic building block of a quantum computer . Without going into details of this topic, it is worth saying ...



So how to calculate the optical attenuation of the optical splitter? Splitting loss: The loss caused by different splitting ratios to the optical signal is called splitting loss, and its value is $-10\lg K$.



Both 1XN and 2XN splitters can be constructed in this fashion with as many as eight or more outputs, with both low return losses and low insertion losses. This design is extremely flexible, allowing one to ...



No epoxy or optical contacting is used in fabrication, making plate beamsplitters intrinsically suitable to high energy applications. The coating type determines the power handling, with very high laser ...



In the context of beam splitters, attenuation can occur due to several factors, including absorption, reflection, and scattering. When a beam splitter divides the incoming light, some of the ...



To reduce loss of light due to absorption by the reflective coating, so-called "Swiss-cheese" beam-splitter mirrors have been used. Originally, these were sheets of highly polished metal perforated with ...



Options range from laser beam combiners designed for specific laser wavelengths to broadband hot and cold mirrors for splitting visible and infrared light. This type of beamsplitter is commonly used in ...



This paper gives the basic theory for computing the ratio of the intensity of the incident beam to the intensity of any selected emerging beam and also for computing the direction of the emerging beam, ...

Contact Us

For more information, pricing, or custom energy solutions, please contact us:

Website: <https://www.gdroofing.co.za>

Email: sales@gdroofing.co.za

Phone: +27 72 418 9365

Address: 22 Electron Avenue, Isando, Johannesburg, 1600, South Africa

This document is for informational purposes only. Specifications subject to change without notice.

