

Optical distribution box with sleeve



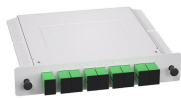
Optical distribution box with sleeve



Fiber distribution box is made of high-strength engineering plastics, anti-UV, anti-aging ability. The distribution box is sealed adopts buckle + two screw type ...



It provides a secure point for splicing, branching, distributing, straight-through, or fiber optic termination, preventing environmental hazards such as dust, moisture, water, or UV rays when used outdoors.



Plastic distribution boxes are designed for installing optical data lines when building FTTX and PON networks both indoors and outdoors. This enclosure can be used as an optical distribution or an optic ...



Explore reliable FTTH terminal boxes for secure fiber termination and distribution. Wall-mounted design, robust build, for home and industrial optical networks.



Optical Distribution Box (ODB-96): This outdoor-rated wall mount enclosure is designed for FTTx networks in single dwelling, multi-dwelling and multi-tenant applications for up to 96 subscribers.



The ODF indoor wall mount fiber optic enclosure is designed to provide a distribution point to feed a high capacity of fiber optic cables to other closets or zones.



Fiber Optic Distribution Box, 12 Port Wall Mount Enclosure with 12 SC APC Adapters, Singlemode, FTTH, IP65 Waterproof Outdoor/Indoor Use - 9.45" x 8.66" x 2.56"



Space-efficient yet expandable, the box accommodates splitters, splicing sleeves, and fiber loops in a modular tray layout for easy maintenance and upgrades. Scalability is built in. This junction box fiber ...



This 16 Ports Pre-Connectorized Optical Fiber Distribution Box is the ideal HUB solution for modern FTTx, ODN, and pre-connectorized network architectures, providing efficient fiber management, fast ...



Explore reliable FTTH terminal boxes for secure fiber termination and distribution. ...



Fiber distribution box is suitable for the wiring connection of optical cable and optical communication equipment, through the adapter in the wiring box, the optical jumper leads the optical signal, and ...

Contact Us

For more information, pricing, or custom energy solutions, please contact us:

Website: <https://www.gdroofing.co.za>

Email: sales@gdroofing.co.za

Phone: +27 72 418 9365

Address: 22 Electron Avenue, Isando, Johannesburg, 1600, South Africa

This document is for informational purposes only. Specifications subject to change without notice.

