

Optical modules compatible with CX341



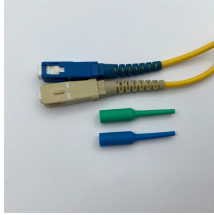
Overview

Each module provides 100 Mbps or 1000 Mbps optical connections. The type of switch, router, or other component determines the compatible type of SFP module. Use only Extreme Networks-certified SFP, SFP+, and SFP28 modules in the SFP port on the hardware. SFP compatibility matrix guides what optics can work with which device. As a mainstream OEM brand, the Cisco SFP compatibility matrix has a. For ONS Family optics product and compatibility information, please click here For High-Density Fiber Patch Panel, Simplex, MPO and Breakout Cables Portfolio Data Sheet, please click here Upgrade to 100G or 400G optics and save. Every FS optical module is tested on real devices in our labs. Provides seamless and flexible supply to respond to urgent and unpredictable demand worldwide. 24/7 around. Optical interoperability with 100GbE CFP, CFP2 and CPAK Arista's Optical Modules and Cable portfolio offer a wide variety of high-density and low-power 800G (dual 400G), 400G, 200G, 100G, 50G, 40G, 25G, 10G, 1G, and 100M Ethernet connectivity options over fiber or copper. This guide explains everything you need to know about Cisco compatible optical transceivers, including how they work, whether they are safe, and why they are widely used across modern

networks. What Are Cisco Compatible Optical Transceivers?

Extreme Networks switches and routers support SFP (small form factor pluggable) interface modules, also known as mini-GBICs.

Optical modules compatible with CX341



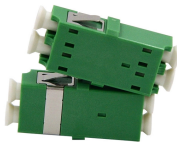
Learn about the next generation of Cisco's 100G optical transceivers and how you can future-proof your network. Read about the latest technology and events related to Cisco's optical transceivers. Watch ...



This SFP guide delivers you quick access to the Cisco transceiver compatibility matrix and detailed Cisco SFP matrix lists breakdown by QSFPTEK for Cisco compatible optical transceiver type and ...



The type of switch, router, or other component determines the compatible type of SFP module. Use only Extreme Networks-certified SFP, SFP+, and SFP28 modules in the SFP port on the hardware.



LINK-PP SFP module are fully compatible with major OEM brands, including Cisco, Juniper, Arista, HPE, and Huawei. Our SFP+ module and QSFP+ transceiver support 10G, 25G, 40G, and 100G ...



Get the highest quality, performance-leading optical transceivers for any network architecture. Find the transceiver model to fit your network.



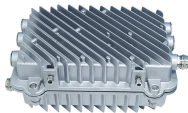
FS offers a growing portfolio of optical transceivers, with speed range from 100M, 1G, 10G, 25G, 40G, 50G, 100G, 200G, 400G to 800G and beyond. The fiber optic ...



The ComNet™ selection of thirty-three Small Form-Factor Pluggable modules allow for an optical or copper interface when using a ComNet managed switch, unmanaged switch or media converter.



Each module is optimized for different media and reach (ranging from 0.5 meters to 80 kilometers). All interface speeds, from 1G to 400GE have connectivity options that include Direct Attach copper ...



This guide explains everything you need to know about Cisco compatible optical transceivers, including how they work, whether they are safe, and why they are widely used across ...



Read about the latest technology and events related to Cisco's optical transceivers. Watch short videos explaining transceiver concepts and how Cisco Optics make life easier for network operators.

Contact Us

For more information, pricing, or custom energy solutions, please contact us:

Website: <https://www.gdroofing.co.za>

Email: sales@gdroofing.co.za

Phone: +27 72 418 9365

Address: 22 Electron Avenue, Isando, Johannesburg, 1600, South Africa

This document is for informational purposes only. Specifications subject to change without notice.

