

Optical splitter causes ONU to disconnect



Overview

This failure is caused by the ONU's laser for a long time. If the ONU emits strong light, the abnormal light emission of the ONU can be determined by testing the optical power at the. At its core, a Passive Optical Network connects one Optical Line Terminal (OLT) at the central office to many Optical Network Terminals (ONTs) in homes or offices. Between them sit optical splitters – dividing one fibre into many. Because there's no powered equipment between the OLT and the ONTs. ONU (Optical Network Unit) is divided into active optical network unit and passive optical network unit. Its internal optical module fiber core is made of glass, and the coupling surface uses high-precision optical elements. This article summarizes some common network problems and solutions for ONUs, set-top boxes and routers. However, troubleshooting a faulty point-to-multipoint network (i. Ethernet & WiFi throughput speeds WiFi channel & signal strength Test fails, missing or duplicated results Commissioning the end-to-end PON once splitters and drop boxes connected in order to prove the final build is within network equipment specifications. (ONT/ONU to OLT direction) Documentation.

Optical splitter causes ONU to disconnect



Correlate optical power dips with service alarms to see whether the fault sits upstream or within a shared splitter. When multiple ONTs under one splitter show similar timing, the problem is ...



An ONU was frequently disconnecting due to a mismatch between the ONU's SC/PC connector and the optical splitter's SC/APC connector, causing 3dB of excess ...



Troubleshooting a faulty passive optical point-to-multipoint network (PON) can be more complex than a point-to-point network. This application note looks at the use of non-intrusive or active fiber testing for ...



Solution: Test the optical loss value with light power first. If the optical loss is large or without light, please check whether the connector and the junction box connector are clean, and ...



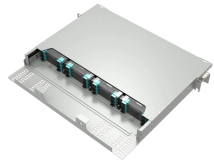
The PON network is a point-to-multipoint configuration and the troubleshooting test is performed directly from an accessible element (ONT or splitter). The operator can disconnect the ...



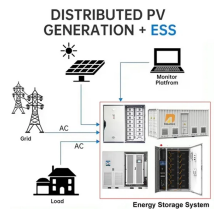
An ONU was frequently disconnecting due to a mismatch between the ONU's SC/PC connector and the optical splitter's SC/APC connector, causing 3dB of excess attenuation.



Splitter failures occur primarily due to mechanical stress and environmental influence, not spontaneous optical breakdown. When splitter modules are mounted without adequate strain relief, ...



Contamination is one of the main causes of optical network failure. Just one particle of dust can cause permanent damage and interrupt traffic. Inspection is the only way to determine if fiber optic ...



If the ONU emits strong light, the abnormal light emission of the ONU can be determined by testing the optical power at the optical splitter during troubleshooting.



During troubleshooting, it was found that disconnecting a certain ONU from the system (such as by turning off its power or unplugging its optical cord) would restore the other ONUs where faults had ...

Contact Us

For more information, pricing, or custom energy solutions, please contact us:

Website: <https://www.gdroofing.co.za>

Email: sales@gdroofing.co.za

Phone: +27 72 418 9365

Address: 22 Electron Avenue, Isando, Johannesburg, 1600, South Africa

This document is for informational purposes only. Specifications subject to change without notice.

