

Outdoor door-to-door transportation of hot-swappable power distribution units in Bolivia



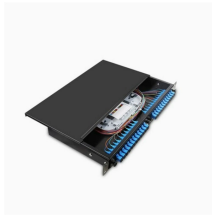
Overview

Eaton offers Hot-Swap PDUs, which make any UPS hot-swappable, as well as Hot-Swappable Modular UPS Systems, which integrate a detachable Hot-Swap PDU. The key component of the hot-swappable design is a modular power distribution unit (PDU) that combines all input and output power connections with a. In logistics fleets operating 18+ hours daily on uneven rural roads or public safety vehicles subject to rapid acceleration/deceleration, mount performance directly dictates device lifespan, data fidelity, and operator trust. Unmitigated vibration in the 5-500 Hz range —dominant in diesel-powered. This FlexPDU provides twelve additional 5-15R output receptacles for the UPS. are a hybrid C13 and C19 outlet accommodating both C20 and C14 power cables in a single flexible outlet. Our Modular Power Distribution products provide cost-effective high levels of availability, and enable toolless addition of circuits and cord-sets without scheduling outages or **♦♦**s power-hungry data center.

Outdoor door-to-door transportation of hot-swappable power distrib



All PDUs including Basic PDUs provide reliable rack-mount power distribution for data centers, server rooms, and network wiring closets. Metered PDUs monitor load levels to avoid potential overloads ...



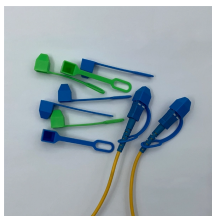
FlexPDUs are available with 5-15R, 5-20R or L5-20R output receptacles, for connection to a wide range of equipment. Both of these options allow for easy deployment, even in space-constrained ...



Discover why rugged vehicle mounts and hot-swappable batteries are critical infrastructure, not just accessories. Learn how OEM integration lowers fleet TCO, prevents ...



HDOT outlets require less space than standard PDU outlets, allowing for maximum outlets in a 42U PDU. One pair of PX4 PDUs with HDOT outlets evenly distributed across the PDU can ...



SmartOnline Hot-Swappable Modular UPS Systems feature a modular power distribution unit (PDU) that combines all input and output power connections with a manual bypass switch. Facility personnel ...



FlexPDUs are available with a variety of output receptacles, for connection to a wide range of equipment. The Eaton HotSwap Maintenance Bypass enhances availability by providing service ...



Each PDM consists of an industry standard circuit breaker, branch current monitoring (BCM), output cable and connector plug combined into a hot-swappable module that feeds power to IT racks.



HotSwap MBP provides a maintenance bypass for all UPSs. UPSs can be hot swapped or upgraded without interrupting the power supply. HotSwap MBP are available with multiple power ratings: 3000 ...



The dual input and manual bypass features of the PDU enable UPS system maintenance—from battery replacement to complete power module exchange—without powering down connected mission-critical ...



Future-proof your infrastructure with a single PDU that can be deployed globally by simply swapping in the appropriate facility type cord for your region, allowing power scaling from 5kW to 27.6kW.

Contact Us

For more information, pricing, or custom energy solutions, please contact us:

Website: <https://www.gdroofing.co.za>

Email: sales@gdroofing.co.za

Phone: +27 72 418 9365

Address: 22 Electron Avenue, Isando, Johannesburg, 1600, South Africa

This document is for informational purposes only. Specifications subject to change without notice.

