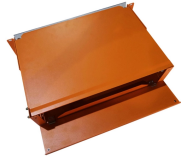


Outdoor rainproof distribution box floor installation



Outdoor rainproof distribution box floor installation



The range of watertight floor boxes from Simon ensures a robust installation with an IK08 rating, supporting a maximum load of up to 2,000 kg, and effectively protects against dust and liquid, ...



Protect your outdoor electrical connections from rain, snow, sun & dust with our durable, UL Listed Daier outdoor junction boxes. Find the perfect size & style for outlets, switches, lights & timers. Shop now!



Learn how to complete a safe, code-compliant Outdoor Electrical Panel Installation with the right tools, PPE, and Linkewell's weatherproof power distribution box.



Ensure your outdoor wiring lasts. Expert guide on selecting weatherproof ratings, maintaining box integrity, and safe, compliant wiring procedures.



Learn the key design points for weatherproof outdoor distribution boxes to ensure durability, safety, and compliance in challenging environments !



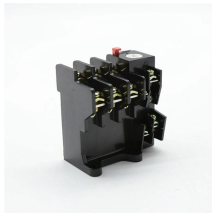
The Lew Electric OB-1-SP is an outside waterproof rated pop-up floor box, for ...



The Lew Electric OB-1-SP is an outside waterproof rated pop-up floor box, for outdoor ground installations. The design and installation make the box weatherproof against any type of climate, ...



The Leviton offering of Weatherproof Covers & Boxes comprises both 1- and 2- gang configurations that comply with the National Electric Code® (2017) Section 406.9 for weatherproof enclosures in damp ...



In this video, I'll show you how to install a weatherproof outdoor electrical box — safe, secure, and code-compliant.



Learn what an outdoor electrical junction box is, NEC 314 requirements, types like pull boxes and splice boxes, proper sizing rules, and when you need weatherproof protection.



In the face of rain or humid air, a reliable waterproof junction box system is the physical defense line for maintaining the long-term stable operation of the power system.

Contact Us

For more information, pricing, or custom energy solutions, please contact us:

Website: <https://www.gdroofing.co.za>

Email: sales@gdroofing.co.za

Phone: +27 72 418 9365

Address: 22 Electron Avenue, Isando, Johannesburg, 1600, South Africa

This document is for informational purposes only. Specifications subject to change without notice.

