

GDR Telecom Site Energy Systems

PE optical cable outer sheath



PE optical cable outer sheath



□□ What Is an HDPE Sheath? HDPE stands for High-Density Polyethylene. An HDPE sheath is a durable plastic outer jacket used to protect fiber optic cables from: In simple terms: The ...



The sheath or outer sheath is the outermost protective layer in the optical cable structure, mainly made of PE sheath material and PVC sheath material, and ...



Obviously, financial return is important in manufacturing fiber optic cable, but I think that's not enough. I think many customers want to support something they really believe in.



The double polyethylene (PE) sheath makes the cable suitable for installation in underground ducts or direct burial. The corrugated steel tape provides mechanical and rodent protection.



Choose the sheath material based on the specific environmental, mechanical, and safety requirements of your installation. Consulting with a fiber optic cable manufacturer or an expert can ...



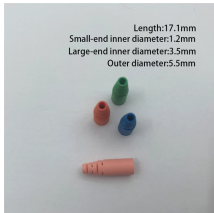
Optical fiber outer sheath: PE outer sheath, aluminum plastic compound tape plus PE outer sheath, steel plastic compound tape plus PE comprehensive outer sheath.



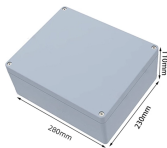
The sheath or outer sheath is the outermost protective layer in the optical cable structure, mainly made of PE sheath material and PVC sheath material, and halogen-free flame-retardant sheath material ...



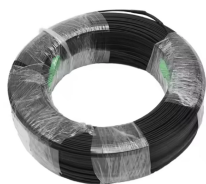
Polyethylene (PE) optical cable sheath material is an outer protective material designed for optical fiber cables, with excellent mechanical strength, weather resistance and insulation properties.



PE virgin compound for sheath material of optical cable, Used for the outer sheath of high standard and high requirement optical cable, it has the advantages of stable testing performance, excellent ...



Explore high-performance PE compounds for cable sheathing. Offering ESCR, heat deformation & track resistance for power, telecom & optical fibre cables.



Because of the low density, good air permeability, excellent insulation and UV resistance of PE fiber cable outer sheath, it is often used in outdoor environments.

Contact Us

For more information, pricing, or custom energy solutions, please contact us:

Website: <https://www.gdroofing.co.za>

Email: sales@gdroofing.co.za

Phone: +27 72 418 9365

Address: 22 Electron Avenue, Isando, Johannesburg, 1600, South Africa

This document is for informational purposes only. Specifications subject to change without notice.

