

Parallel cable tray connection to vertical cable tray side



Parallel cable tray connection to vertical cable tray side



This article provides an in-depth look at the cable tray spacing standards that should guide your next installation project. Let's dive deeper into the specific cable tray spacing ...



Make expansion connections wherever cable tray and trunking are crossing building expansion joints. Cable trays are to be made good at all joints or holes, first treat the surfaces with a suitable rust ...



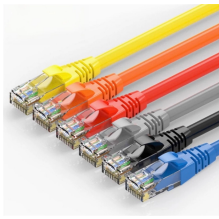
Some applications may require the cable tray to support the weight of a single, dead object in addition to the cable loads. Specifications typically require this to be applied at the midpoint of the span between ...



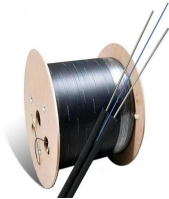
An object of the present invention is to provide a seismic resistant cable tray which can prevent a cable tray from being damaged by buffering an impact at a connecting member between unit trays even if a ...



Instead of large conduits, cable channel may be used very effectively to support cable drops from the cable tray run to the equipment or device being serviced and is ideal for cable tray runs involving a ...



Horizontal or vertical bends, tees, and crosses are fabricated by notching out segments of side rail grids, and overlapping and connecting parallel wires using a connector.



Cable tray length is selected based on the load to be supported, the distance between the supports (also referred to as the span), and handling and installation constraints.



This guide covers the cable tray types and their appropriate applications, the fill rules for each configuration, ampacity derating requirements, separation of power and signal cables, and the ...



When fitting cable trays and their accessories, the products are cut on site to create changes of direction, adjust sections, etc. Damage can also occur during handling; as a result, both the ...



My suggested strategy would be to run the required EGC as a separate conductor, in the same tray. Then tie the cables' factory EGCs to ground on exclusively one side, while wire nutting ...



Basket tray X connectors require 4 SSP-90-2 kits to provide a Cross. Remove a section of each Tray side wall, overlap and connect. Vertical Adjustable Splices conquer obstacles that may occur when ...

Contact Us

For more information, pricing, or custom energy solutions, please contact us:

Website: <https://www.gdroofing.co.za>

Email: sales@gdroofing.co.za

Phone: +27 72 418 9365

Address: 22 Electron Avenue, Isando, Johannesburg, 1600, South Africa

This document is for informational purposes only. Specifications subject to change without notice.

