

Permissible span for overhead optical cables



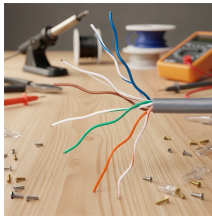
Permissible span for overhead optical cables



5. Optical Fiber Cable Characteristics 5.1 The Mechanical and Environmental Performance of the Cable ... 5.2 Installation Conditions



This document defines standards for overhead fiber optic cable at JEA, including: 1. Engineering definitions for fiber optic cable components and installation specifications.



5.2 If a fiber optic cable is overlashed to an existing fiber cable, the aerial span should not exceed 50% of the recommended length given in Table C. Alternatively, a fiber cable can be overlashed to an ...



Clearance regulations dictate a minimum separation of 300 mm between overhead service conductors and optical fiber cables, with additional height requirements above roofs. Exceptions allow for ...



Fiber optic cable sequential numbers are required at each pole location and vault wall. Sequential numbers will identify conduit length, and slack left in vaults and at poles.



Unless directed by the owner or other agency that unused cables are reserved for future use, remove abandoned optical fiber cable (cable that is not terminated at equipment other than a connector and ...



In this study, using a fixed installation tension (20 lbf and 40 lbf), the span distance necessary to induce a force equivalent to reach the mechanical/optical performance limits of the cable at each NESC ...



CABLE TENSION CALCULATIONS your cable will be used. In addition to installed sag (see above) this should include the Maximum Span Length and any applied loads (ice wind, attachments, etc.). This ...



Cables offering a mechanical decoupling between fibres and cables are very good candidates for aerial deployment: this gives the opportunity to reach longer span with limited reinforcement without ...



Outside plant cables often span distances longer than the limits of manufactured cables (5-15 km typically), Deploying cables of lengths >5km can be difficult, so cables may need to be spliced to ...

Contact Us

For more information, pricing, or custom energy solutions, please contact us:

Website: <https://www.gdroofing.co.za>

Email: sales@gdroofing.co.za

Phone: +27 72 418 9365

Address: 22 Electron Avenue, Isando, Johannesburg, 1600, South Africa

This document is for informational purposes only. Specifications subject to change without notice.

