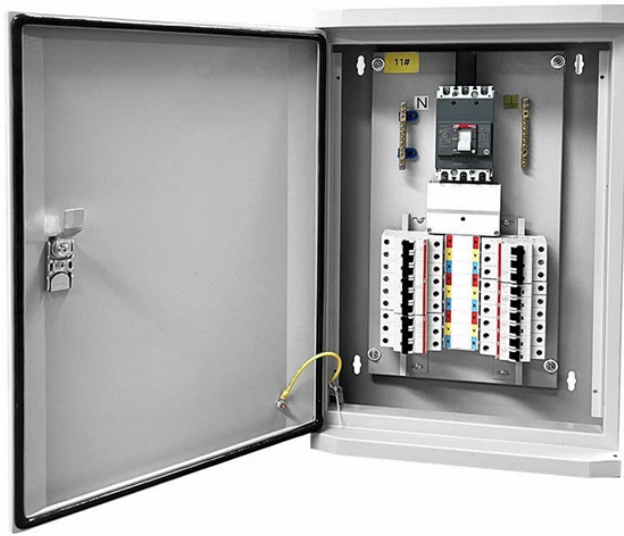


GDR Telecom Site Energy Systems

Pipeline Cable Well



Pipeline Cable Well



StreamLine cable is provided as a system with integrated dual packoff and a specially designed sealed torpedo to ensure complete isolation from well fluids such as gas entering the cable.



This Styrobud SK-1 cable well is used as a through well in a 1-hole teletechnical canalization. Its body consists of two elements - in the upper part there is a frame for mounting a ...



This 500 ft. 10/3 THW CU Pump Cable features footage markings on the jacketed and parallel cables for your convenience, and this cable is ideal for farm, industrial or residential water well applications.



Below, we offer a brief overview of each option, outlining their fundamental components and suggesting scenarios where they might be most applicable.



What is a Well Pump Wire? A well pump wire is an electrical cable created specifically to deliver power to submersible well pumps. Its design exposes it to harsh realities of the surroundings, ...



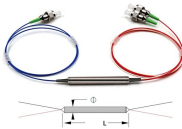
Able Underground Construction provides integrated underground solutions for all your pipeline, septic and sewer needs. From inspections and excavation to installations, repairs, and surface ...



Invest in our top-quality submersible well pump wire to maximize your system's efficiency and reliability. With its unique construction and certifications for drinking water applications, you can trust our cable ...



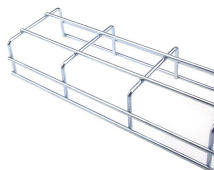
From excavation to pipeline installation and repairs, we provide services for projects of all sizes, from small homeowner jobs to large projects with developers and municipalities.



Upgrade your well pump system with high-quality submersible pump wire and wire splices from RPS Water Pumps. Whether you're replacing old wiring or installing a new pump, we've got the reliable ...



Our innovative portfolio of wireline intervention services delivers reliable, real-time performance throughout the life of your wells.



From excavation to pipeline installation and repairs, we provide services for projects of all sizes, from small homeowner jobs to large projects with developers and ...

Contact Us

For more information, pricing, or custom energy solutions, please contact us:

Website: <https://www.gdroofing.co.za>

Email: sales@gdroofing.co.za

Phone: +27 72 418 9365

Address: 22 Electron Avenue, Isando, Johannesburg, 1600, South Africa

This document is for informational purposes only. Specifications subject to change without notice.

