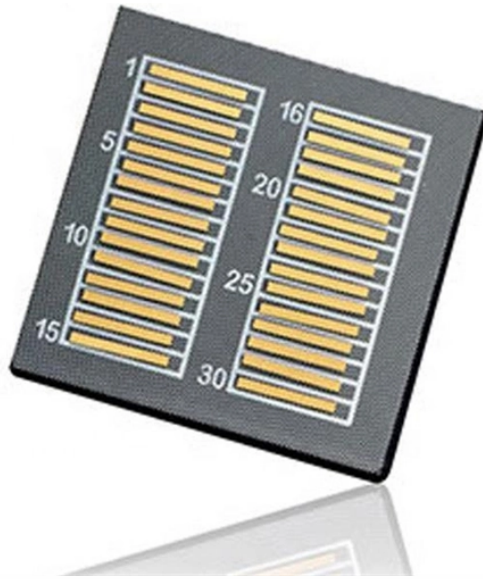


## Portugal Aggregation Switch 1 6T



## Portugal Aggregation Switch 1 6T



Celestica DS6000 is a next-generation ultra-high-density 1.6T OSFP224 switch designed for the most demanding data center and AI network environments where maximum bandwidth, scalability, and ...



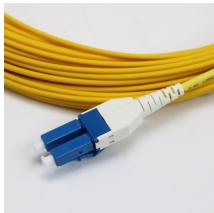
Equipped with all-fiber ports, Aggregation Series Switches deliver up to 10 Gbps. With advanced features such as Static Routing, DHCP Server, ACL, IGMP Snooping, STP, LAG, and centralized ...



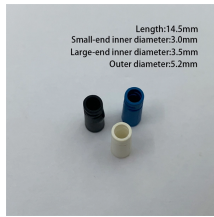
Edgecore delivers advanced networking solutions with flexible switch hardware options and SONiC operating system support, enabling robust spine-leaf architectures. From 1G management switches ...



Celestica DS6001 is a next-generation ultra-high-density 1.6T OSFP224 switch developed for advanced data center and AI infrastructures that require extreme bandwidth, efficient scaling, and high ...



An Aggregation or "Top-of-Rack" switch is designed to connect everything in a rack at high speeds, then have an even bigger pipe out to the rest of the network. The Pro Aggregation does this with it's ...



High-performance 1.6T AI fabric switch built on Broadcom Tomahawk 6, delivering 102.4 Tbps switching capacity with Adaptive Routing and congestion control for GPU-dense AI training clusters.



Assuming a new project to define the next rate of Ethernet begins in 2020, and takes 5 years to complete (2025), growth rate curves based on either 800GbE or 1.6TbE were also generated and ...



Discover the development timeline, the key innovations and challenges in 800G Ethernet and 1.6T Ethernet.



Equipped with all-fiber ports, Aggregation Series Switches deliver up to 25 Gbps. With features such as Static Routing, DHCP Server, ACL, IGMP Snooping, STP, LAG, and centralized cloud management, ...



Featuring state-of-the-art Broadcom chipsets, these switches offer capacities ranging from 200G to 1.6T. Integrated into GIGAPOD cluster computing platforms, the joint display highlights ...

## Contact Us

For more information, pricing, or custom energy solutions, please contact us:

Website: <https://www.gdroofing.co.za>

Email: [sales@gdroofing.co.za](mailto:sales@gdroofing.co.za)

Phone: +27 72 418 9365

Address: 22 Electron Avenue, Isando, Johannesburg, 1600, South Africa

This document is for informational purposes only. Specifications subject to change without notice.

