

Power Distribution Box Specifications and Dimensions xrl



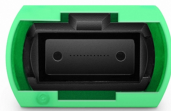
Power Distribution Box Specifications and Dimensions xrl



Below are the typical dimensions for a standard configuration. This is an example of a single-line diagram (SLD) for an XL-21 power distribution application. We build ...



The XL-21 Power Distribution Box is used for power distribution, conversion, transmission, control, and on-site operations in low-voltage distribution systems. It is widely applied in power plants, ...



The main distribution box adopts self-design of new components, compact structure, beautiful appearance, easy maintenance, a variety of wiring options for users to choose, it is an ideal ...



The XL-21 power distribution box is widely used in power plants and industrial enterprises. It is suitable for three-phase power or lighting distribution systems below 500V, including three-phase three-wire, ...



Below are the typical dimensions for a standard configuration. This is an example of a single-line diagram (SLD) for an XL-21 power distribution application. We build each cabinet to your project's ...



The XL-21 Low Voltage Power Distribution Cabinet serves various industries, including metallurgy, mining, petroleum, chemicals, textiles, ports, and stations. It functions as a power distribution and ...



The XL-21 low voltage power distribution cabinet is suitable for three-phase four-wire systems with AC voltages up to 500V. It is primarily used for power distribution purposes in power plants, industrial ...



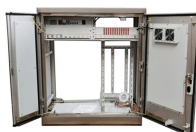
This comprehensive guide delves into the specifications and standards of the XL-21 power distribution cabinet, providing valuable insights for engineers, facility managers, and electrical ...



Eaton's range of power distribution assemblies not only provides you optimum power distribution and motor control functionalities, they meet your most demanding requirements for safety and flexibility.



XL Low Voltage Power Distribution Cabinet suitable for three-phase four-wire systems with AC voltages up to 500V. It is primarily used for power distribution purposes in power plants, indu



Eaton's Power Xpert Release (PXR) trip units are programmable communicating microprocessor-based low-voltage electronic trip unit systems for Eaton molded case circuit breakers.

Contact Us

For more information, pricing, or custom energy solutions, please contact us:

Website: <https://www.gdroofing.co.za>

Email: sales@gdroofing.co.za

Phone: +27 72 418 9365

Address: 22 Electron Avenue, Isando, Johannesburg, 1600, South Africa

This document is for informational purposes only. Specifications subject to change without notice.

