

Pre-installation of wiring in distribution box



Pre-installation of wiring in distribution box



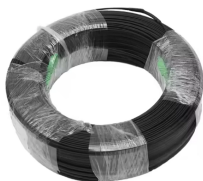
This article provides a detailed overview of the entire process of installing a distribution box, from pre-installation preparation to post-installation maintenance, and summarizes common ...



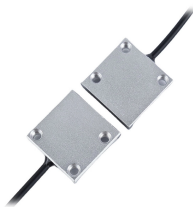
Ensure the polarity & the ring circuits are tested for proper installation. Ensure that the outgoing cables from the lighting DB are terminated in all light fittings. Ensure that the earthing of the DB has been ...



Before starting the installation, finding a proper place for putting the distribution box is crucial, because it largely decides the safety and convenience of maintenance. Let's see what factors ...



It outlines 4 steps: 1) Pre-installation preparation including reviewing plans and ensuring safety, 2) Mounting panels and running wiring, 3) Installing circuit breakers or fuses, and 4) Terminating ...



- For surface-mounted distribution boxes on the wall, the indoor ceiling, wall, and decoration should be completed before installation; for flush ...



Comcast will install drop cable from our plant to pre-wired Single-Family Homes after the underground drop conduit duct structure has been placed from the pedestal to the home.



Box installation: Make sure that Distribution box has been correctly installed and fixed. Material preparation: Prepare the required circuit breakers, wires, wiring ties and other materials, and ...



Ensure the polarity & the ring circuits are tested for proper installation. Ensure that the outgoing cables from the lighting DB are terminated in all light fittings. Ensure ...



Learn how to install a distribution box safely and correctly. Covers wiring, placement, standards, and expert tips for a compliant setup.



It outlines 4 steps: 1) Pre-installation preparation including reviewing plans and ensuring safety, 2) Mounting panels and running wiring, 3) Installing ...



Learn how to wire a distribution box step by step! This video shows real on-site footage of electrical installation, demonstrating safe and standardized wiring methods used by...



- For surface-mounted distribution boxes on the wall, the indoor ceiling, wall, and decoration should be completed before installation; for flush-mounted control (distribution) boxes,...



For building owners, architects, construction managers, facilities engineers, and network administrators alike, ACS modular zone distribution systems are the intelligent choice. Zone wiring is ...

Contact Us

For more information, pricing, or custom energy solutions, please contact us:

Website: <https://www.gdroofing.co.za>

Email: sales@gdroofing.co.za

Phone: +27 72 418 9365

Address: 22 Electron Avenue, Isando, Johannesburg, 1600, South Africa

This document is for informational purposes only. Specifications subject to change without notice.

