

Primary Distribution Box Quick Power-Off Device



Primary Distribution Box Quick Power-Off Device



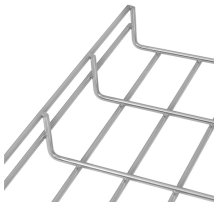
With one input and several outputs, these boxes allow multiple devices to connect through the distro instead of directly to the power supply. This setup enhances safety while making ...



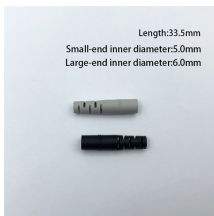
It integrates power distribution, protection, and monitoring capabilities, and is responsible for distributing power to entire commercial or residential buildings. To put it bluntly, the distribution ...



Includes relays and circuit breakers for overload protection of all connected devices, and quick-connect fittings for lights and FFUs. To estimate power usage, simply total current load of all Fan/Filter Units ...



The main switch turns off all power in the board at once. Individual breakers let you turn off just one part, like the kitchen or a single room, without cutting power to the whole building.



The simplest primary distribution system consists of independent feeders with each customer connected to a single feeder. Since there are no feeder interconnections, a fault will ...



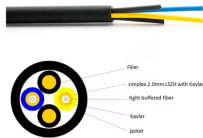
The best device for distributing solar power is a panel box for fuse bank. Before being dispersed throughout the house, the power is stored on the solar ...



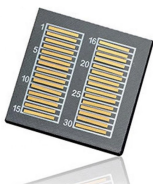
A Power Distribution Unit (PDU) is a specialized electrical device designed to distribute power from a single input source to multiple output receptacles, specifically engineered for data center and IT ...



This structure ensures effective power management, safety, and reliability in complex electrical systems, particularly on construction sites or large-scale projects.



The simplest primary distribution system consists of independent feeders with each customer connected to a single feeder. Since there are no ...



The size and class of primary switchgear or fused loadbreak interrupters and the characteristics of the primary fuses are to be specified by DTE Primary Services.



Electro Centers or Integrated Power Assemblies (IPA) can be fitted out with a variety of electrical distribution equipment and shipped to the site in preassembled modules for mounting on elevated ...



With devices like DB circuit breakers, variable frequency drives (VFD), and automatic transfer switches (ATS), these boxes provide reliable power distribution while safeguarding ...

Contact Us

For more information, pricing, or custom energy solutions, please contact us:

Website: <https://www.gdroofing.co.za>

Email: sales@gdroofing.co.za

Phone: +27 72 418 9365

Address: 22 Electron Avenue, Isando, Johannesburg, 1600, South Africa

This document is for informational purposes only. Specifications subject to change without notice.

