

## Principle of Fiber Optic Communication Displacement Sensors



### Overview

When the probe ends of optical fiber are close to the technical test piece, the light in the transmitting fiber can't be reflected into the receiving fiber, and the photocurrent signal can't be generated when it comes out; When the measured surface is gradually far away from. When the probe ends of optical fiber are close to the technical test piece, the light in the transmitting fiber can't be reflected into the receiving fiber, and the photocurrent signal can't be generated when it comes out; When the measured surface is gradually far away from. Fiber optic sensors utilize the propagation characteristics of light within optical fibers to detect environmental changes. The basic working principle is that when the light signal passes through the optical fiber, parameters such as light intensity, wavelength, and phase will be affected by the displacement, pressure, temperature and electric field. Recently, high precision fiber displacement sensors have received significant attention for applications ranging from industrial to medical fields that include reverse engineering and micro-assembly (Laurence et al., 1998; Shimamoto & Tan ka. This article explores the different types of Fiber Optic Sensors, their working principles, and various applications. P 603 Radiation absorption excites an

orbital electron to a higher energy level. Due to its small size, low cost and ease of fabrication leading it to replace traditional sensors which were used frequently before th birth of fiber optic sensors.

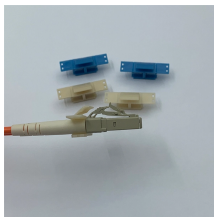
## Principle of Fiber Optic Communication Displacement Sensors



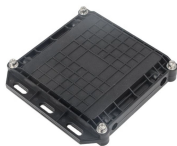
A typical system comprises a light source, a transmitting optical fiber, a receiving optical fiber, and a photodetector. The fundamental concept involves monitoring the variation in light ...



The working principle of optical fiber displacement sensor When the probe ends of optical fiber are close to the technical test piece, the light in the transmitting fiber can't be reflected into t...



This article reviews specifically the advanced fiber optic displacement sensing techniques that have been developed in the past two decades.



**CHAPTER 09 FIBER OPTIC SENSORS**  
INTRODUCTION: After the invention of LASER in 1960 a new branch in fiber optics developed in parallel with the communication which is also a well known and ...



What is a Fiber Optic Sensor? A sensor that uses optical fiber as a detecting element is known as a fiber optic sensor. In remote sensing, fibers play a key role but based on the ...



fiber based sensors are also presented in this chapter. The application of the FODSs in liquid refractive index measurement is investigated theoretically and experimentally. In the last part of this chapter, a ...



This article explores the different types of Fiber Optic Sensors, their working principles, and various applications. We'll delve into Intrinsic, Extrinsic, and ...



This work reviews the fiber-optic sensors based on Bragg gratings, long period gratings, interferometers, surface plasmon resonance, fluorescence, ...



Radiation absorption creates electronic excited states that are trapped by localized defects for extended periods of time. Heating the material enables the trapped states to interact with phonons and decay ...



As a sensing technology based on the principles of optical fiber, fiber optic sensors have gradually become key equipment in many industries due to their advantages, such as high precision, ...



This article explores the different types of Fiber Optic Sensors, their working principles, and various applications. We'll delve into Intrinsic, Extrinsic, and Hybrid fiber optic sensors, explaining how they ...



This paper presents a linear fiber optic displacement sensor for the use over a large range based on the macro-bending loss. The sensor incorporates an extremely simple design, light source ...



This work reviews the fiber-optic sensors based on Bragg gratings, long period gratings, interferometers, surface plasmon resonance, fluorescence, and light diffusion.

## Contact Us

For more information, pricing, or custom energy solutions, please contact us:

Website: <https://www.gdroofing.co.za>

Email: [sales@gdroofing.co.za](mailto:sales@gdroofing.co.za)

Phone: +27 72 418 9365

Address: 22 Electron Avenue, Isando, Johannesburg, 1600, South Africa

This document is for informational purposes only. Specifications subject to change without notice.

