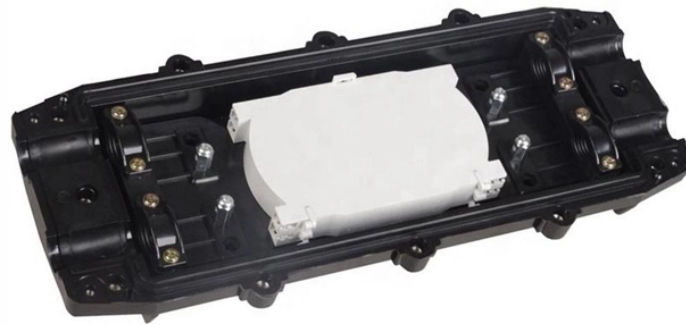


## Procurement of Energy-Saving Cable Trays



## Procurement of Energy-Saving Cable Trays



Snap Track ventilated aluminum cable tray for power generation, utility-scale solar BOS, substations, and battery energy storage. 40-60% labor savings vs conduit.



Over the years, I've seen projects succeed and fail based on how well these trays were specified, procured, and inspected. This guide pulls together field lessons, practical tips, and key IEC...



Comprehensive guide to selecting cables, trays & solar mounting systems. Get manufacturer insights on materials, specifications & cost-saving procurement strategies.



Use of standard grades of plastic wire ties is by far the most common method used by installers to support and secure direct current (DC) string wiring in an array. At least some of these standard ...



Snap Track ventilated aluminum cable tray for power generation, utility-scale solar BOS, substations, and battery energy storage. 40-60% labor savings vs conduit.



We manufacture a wide range of products capable of providing the characteristics which respond to the proposed application, along with quality of assembly, speed of installation, and cost-saving cable trays.



In designing supports for a cable tray system, consideration should be given to the loads associated with future cable additions and any additional loading that may be applied to the cable tray system (e.g., ...



To address global climate change and reduce carbon emissions, we are committed to developing and promoting lightweight, energy-efficient steel cable trays, accelerating product innovation and upgrades.



Explore sustainable cable tray technologies. Learn about eco-friendly materials, recycled content, and energy-efficient designs for a greener infrastructure.



Cost-effective: The cost of materials associated with a cable tray system (not inclusive of cables in the tray) are typically lower than an equivalent cable bus system.



Ectray cable trays and cable ladders provide high-strength cable protection that protects the cables from external factors. Support systems can be manufactured with thicknesses from 2mm to 6mm with Pre ...

## Contact Us

For more information, pricing, or custom energy solutions, please contact us:

Website: <https://www.gdroofing.co.za>

Email: [sales@gdroofing.co.za](mailto:sales@gdroofing.co.za)

Phone: +27 72 418 9365

Address: 22 Electron Avenue, Isando, Johannesburg, 1600, South Africa

This document is for informational purposes only. Specifications subject to change without notice.

