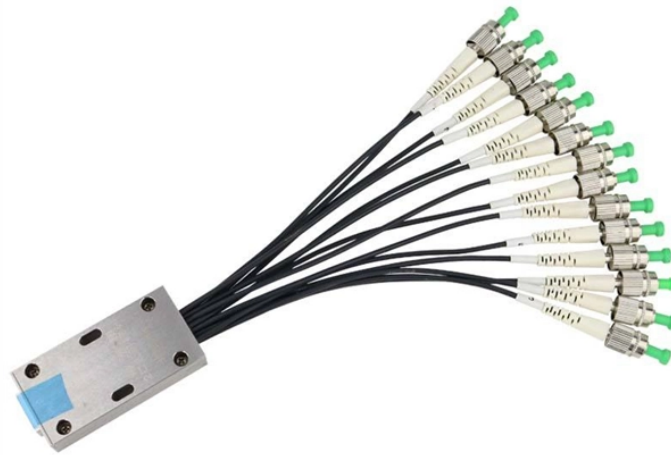


Protective Measures for Removing Telecommunication Fiber Optic Cables

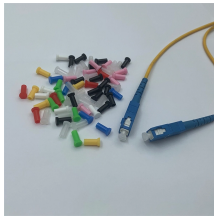


Overview

Ensure you wear gloves when dealing with chemicals, and make use of masks in well-ventilated areas. Protective eyewear is a must. Fiber optic cables enable high-speed, long-distance data transfer, forming the backbone of modern communication. Yet, outdoors, they face temperature swings, moisture, UV exposure, rodents, and human interference. This guide covers how to. Introduction This Program provides supervision, employees and safety managers with general safety rules, task safety procedures and best techniques for installation of quality fiber optic cable systems (cable handling, splicing, pulling, terminating testing and trouble shooting tasks). Removing these cables from specialized equipment, such as an Optical Network Terminal (ONT) or fiber gateway, requires different precautions than. alternative pedestrian routes if work area ectly remove chamber cover in accordance with required standard (SA002) Contain open chamber, chamber cover & equipment within seg r, perform water test to determine category e. If volume is <5m³ & is not deemed as polluted then. Fiber optic technicians and

telecom workers are in charge of installing, maintaining, and fixing fiber optic network systems. It is. This section sets forth safety and health standards that apply to the work conditions, practices, means, methods, operations, installations and processes performed at telecommunications centers and at telecommunications field installations, which are located outdoors or in building spaces used for.

Protective Measures for Removing Telecommunication Fiber Optic C



this document describes the general safety precautions that should be adhered to while working in the Fiber Optic industry. Not all of these admonishments will apply to every situation, but you should be ...



CAUTION:Fiber optic cable is sensitive to excessive pulling, bending and crushing forces. Refer to cable specification sheet for the loose tube ribbon cable bend radius.



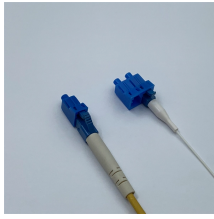
Employees will not bring cosmetics, lip balm, medicine, eye drops, chewing gum, chewing tobacco, hand creams, or lotions in areas where fiber optic cables are being spliced or terminated, or where bare ...



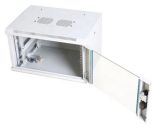
Master the precise, safe technique for detaching fragile glass fiber cables from your modem, ensuring component protection and eye safety.



It may be prudent to install critical indoor fiber optic cables inside bright orange "innerduct" to protect it. The additional initial cost of the innerduct may be offset by the simplification of the installation saving ...



Environmental Protection Measure: Waste and spoil disposed of in the designated area or receptacle provided for waste.



Before installing or removing wire or cable, the pole or structure shall be guyed, braced, or otherwise supported, as necessary, to prevent failure of the pole or structure.



Protecting them is essential for long-term reliability. This guide covers how to safeguard outdoor fiber optics across underground, aerial, direct-burial, and exposed setups. Before applying ...



Navigate the intricacies of fiber optic safety with an authoritative guide on handling hazards, protective gear, and best practices.



It lists the potential hazards at each job step such as striking underground utilities during excavation, trench collapse, and exposure to toxic gases. It also lists the required control measures to mitigate ...



Fiber Optic-Specific Safety Protocols Fiber optic work introduces hazards that don't exist in traditional construction. These microscopic glass fibers and the chemicals used in termination ...

Contact Us

For more information, pricing, or custom energy solutions, please contact us:

Website: <https://www.gdroofing.co.za>

Email: sales@gdroofing.co.za

Phone: +27 72 418 9365

Address: 22 Electron Avenue, Isando, Johannesburg, 1600, South Africa

This document is for informational purposes only. Specifications subject to change without notice.

