

Recommended Low-Voltage Beam Splitters



Recommended Low-Voltage Beam Splitters



Broadband Beam Splitters: These beam splitters provide consistent performance over a wide wavelength range. They are ideal for applications requiring uniform light division across multiple ...



Thorlabs offers a wide range of optical beamsplitters. Our plate beamsplitters have a coated front surface that determines the beam splitting ratio while the back surface is wedged and AR coated in ...



Our beam splitters are made from high grade glass material with laser grade surface flatness & surface quality for tighter tolerance on the splitting ratio.



Explore our expert review of the 7 best beam splitters for advanced optics demonstrations. Enhance your laboratory precision and choose your ideal tool today.



Edmund Optics offers plate, cube, pellicle, polka dot, or specialty prism Beamsplitters in a variety of anti-reflection coatings or substrates. Standard Beamsplitters, which split incident light by a specified ratio ...



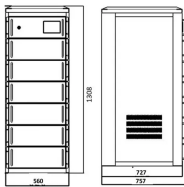
Good fit for large beam size applications at a reasonable price. Advantages are: minimal back reflection, compact light-path as compared to cube type beamsplitters and low chromatic dispersion. There may ...



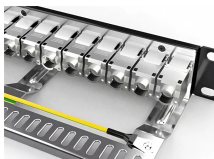
This Beamsplitters Selection Guide outlines the core types of beamsplitters, explains how they work, and provides practical advice for choosing the best one for your application.



This beam splitters buying guide provides technical background, comparison of major types, selection criteria, and an overview of suppliers.



Cube beam splitters are often preferred for their minimal transverse offset and durability. They can be used in imaging systems and are available in polarizing and non-polarizing forms.



Quick-reference guide for beam splitters — key equations, type comparison tables, Fresnel reflectance, polarizing designs, and a practical selection workflow. Condensed from the comprehensive guide.

Contact Us

For more information, pricing, or custom energy solutions, please contact us:

Website: <https://www.gdroofing.co.za>

Email: sales@gdroofing.co.za

Phone: +27 72 418 9365

Address: 22 Electron Avenue, Isando, Johannesburg, 1600, South Africa

This document is for informational purposes only. Specifications subject to change without notice.

