

# Relay Protection Experimental Devices



## Overview

Electromechanical protective relays at a hydroelectric generating plant. The relays are in round glass cases. The rectangular devices are test connection blocks, used for testing and isolation of instrument transformer circuits. Overview In a protective relay is a device designed to trip a when a is detected. The first protective relays were electromagnetic devices, relying on coils operating on moving par. Electromechanical protective relays operate by either, or. Unlike switching type electromechanical with fixed and usually ill-defined operating voltage thresholds.

## Relay Protection Experimental Devices



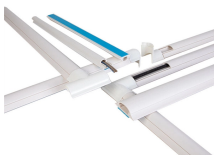
Eaton's protective relays provide you with unique microprocessor-based devices that eliminate unnecessary trips, isolate faults, protect motors and breakers, and ...



Protective relays and devices have been developed over 100 years ago to provide “lastline” of defense for the electrical systems. They are intended to quickly identify a fault and isolate it so the balance of ...



Electromechanical protective relays at a hydroelectric generating plant. The relays are in round glass cases. The rectangular devices are test connection blocks, used for testing and isolation of ...



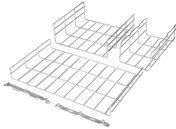
Types of protection relays are mainly based on their characteristic, logic, on actuating parameter and operation mechanism. Protective relays can be categorized based on their operating ...



The experimental results show that this method can effectively analyze the operation characteristics of power system relay protection, and can accurately check whether the relay ...



Feb 24, 2012· Types of protection relays are mainly based on their characteristic, logic, on actuating parameter and operation mechanism. Protective ...



In this paper we have discussed a various protective schemes with testing electromechanical relay. Through this practical set-up, the students can get familiar with the fundamentals of protection and ...



Through interaction with actual secondary protection systems, it accurately replicates power grid operational characteristics, providing a dynamic experimental platform for validating relay ...



This document outlines laboratory experiments focused on various electrical protection relays, including IDMT Over Current, Differential, and Negative Sequence relays. It details objectives, apparatus, ...



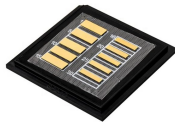
This paper focuses on principle-based and equipment-based relay protection experimental platforms, analyzing their respective characteristics, ad-vantages, and limitations.



A fast and selective arc fault mitigation for air-insulated LV & MV switchgear and Relion protection and control relays and sensor technology protect staff and plant facilities for many years.



Protective relays are critical in power systems because they serve as decision-making devices that ensure the safe operation of power grid. They play a key role in power system protection.



This handbook covers the code of practice in protection circuitry including standard lead and device numbers, mode of connections at terminal strips, colour codes in multicore cables, dos ...

## Contact Us

For more information, pricing, or custom energy solutions, please contact us:

Website: <https://www.gdroofing.co.za>

Email: [sales@gdroofing.co.za](mailto:sales@gdroofing.co.za)

Phone: +27 72 418 9365

Address: 22 Electron Avenue, Isando, Johannesburg, 1600, South Africa

This document is for informational purposes only. Specifications subject to change without notice.

