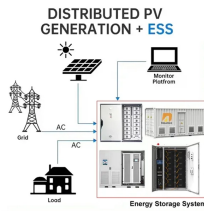


## Relay protection for single-sided power supply lines



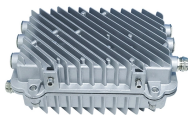
## Relay protection for single-sided power supply lines



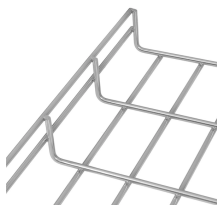
This is why relay protection is inseparable from broader system thinking and sits alongside topics such as power system protection rather than being subsumed by any single relay type. Schemes, not ...



Learn more about the work of protective relays in power systems, their features and operating principle.



Prepared by Working Group I5 Working Group Assignment presentation of protection and control relaying. The report will identify methodology behind these practices, present issues ...



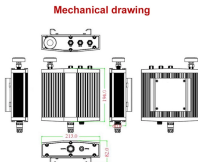
The L90 provides high-speed current differential protection suitable for transmission lines and cables of various voltage levels, while supporting complete distance protection and dual-breaker applications ...



Compact medium voltage protection relays From overcurrent to advanced protection, these easy-to-use protection relays (formerly known as Easergy P3) offer arc flash protection, LPCTs, LPVTs and ...



Relay systems protect high-voltage equipment and transmission lines to ensure safe, stable systems. Although failure of a protective relay system may have severe local or regional impacts, most ...



(2) (protective relay system) A circuit from a relay system that exercises direct or indirect control of power apparatus such as tripping or closing of a power circuit breaker.



Protect critical components in your power system with a wide range of SEL protective relays covering applications and use cases from low to high-voltage protection.



Our comprehensive portfolio of protection technology enables reliable grid availability in the voltage ranges of 10 kV to 110 kV. The protective and control devices can ...



The SIPROTEC 7SD87 provides selective differential protection for overhead lines and cables of all lengths with single-ended and multi-ended infeed for up to 6 ends.



Special protection systems, protection of multi-terminal lines, and single-phase tripping and reclosing are also included. The impact of different electrical parameters and system performance considerations ...



A fast and selective arc fault mitigation for air-insulated LV & MV switchgear and Relion protection and control relays and sensor technology protect staff and plant facilities for many years.



A number of bus protection schemes are presented; their adequacy, complexity, strengths, and limitations with respect to a variety of bus arrangements are discussed; specific application ...

## Contact Us

For more information, pricing, or custom energy solutions, please contact us:

Website: <https://www.gdroofing.co.za>

Email: [sales@gdroofing.co.za](mailto:sales@gdroofing.co.za)

Phone: +27 72 418 9365

Address: 22 Electron Avenue, Isando, Johannesburg, 1600, South Africa

This document is for informational purposes only. Specifications subject to change without notice.

