

## Remote Fiber Optic Switch



## Remote Fiber Optic Switch



We produce a wide range of turn-key fiberoptic switch systems that integrate fiber components with electronics, firmware, with all computer/internet interface formats having user-friendly graphics ...



These switches are specially optimized to handle fiber optic transmissions efficiently. They find widespread use in businesses where seamless switching between optical signals and conventional ...



BlueRigger Digital Toslink Optical 3x1 Switch - (LPCM 2.0, SPDIF Optical Audio Switcher with IR Remote Control, 3 in 1 Fiber Optic Switch) - Compatible with Gaming Console, HDTV, Amplifier, ...



These fiber switches offer a cost-effective way to provide flexibility in optical network connectivity. Applications include optical protection, optical channel monitoring, remote fiber test systems ...



QuickSwitch® Fiber Optic QuickSwitch® Remotely Controllable Fiber Optic Switches to support such applications as Commercial Networks, Industrial Networks, and MiL Spec Operations.



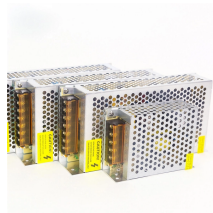
XSOS-576D supports centralized and distributed architectures with secure remote access. All operations — switching, troubleshooting, monitoring — are available without on-site technician ...



These switch individual wavelengths onto specific fiber optic paths and may be incorporated with dense wavelength division multiplexing (DWDM) to enable multiple light wavelengths to coexist and provide ...



The highly flexible fiber-optic cable and small sensing end make it easy to position these switches in hard to reach areas. They detect the presence or absence of an object moving at high speeds with a ...



Our fiber optical switches offer several control options - remote control, control via button switch or both. The signal passes through the switch optically, without any electrical conversion.



The SEL-2126 is a high-speed communications device that senses contact inputs to route data streams between remote and local relays, or between the remote and one or two transfer relays.

## Contact Us

For more information, pricing, or custom energy solutions, please contact us:

Website: <https://www.gdroofing.co.za>

Email: [sales@gdroofing.co.za](mailto:sales@gdroofing.co.za)

Phone: +27 72 418 9365

Address: 22 Electron Avenue, Isando, Johannesburg, 1600, South Africa

This document is for informational purposes only. Specifications subject to change without notice.

