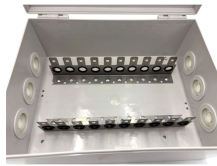


Requirements for 1140V Distribution Boxes



Requirements for 1140V Distribution Boxes



The correct choice and installation of distribution boxes are crucial for electrical safety, efficiency, and reliability. This guide provides an exhaustive overview of the different types of distribution boxes, ...



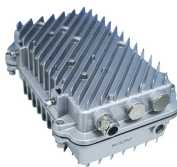
Begin by determining the electrical load requirements and selecting an appropriately sized distribution box. Calculate the total current demand of all circuits and choose a box with adequate ...




The Heart of Your Electrical System Think of your home's distribution box as the Grand Central Station of your electrical system. Just like travelers need clear pathways and safety protocols, your electrical ...





Before starting the installation, finding a proper place for putting the distribution box is crucial, because it largely decides the safety and convenience of maintenance. Let's see what factors ...





The installation requirements and specifications of Distribution box involve many aspects, including site selection, fixing method, wiring specifications and safety protection.

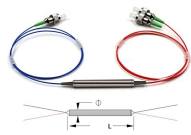
	<p>The components in the box should be installed tightly, the coating should not slip or be damaged, and there should be anti-loosening measures, and the fasteners should be complete.</p>
---	---

	<p>Learn how to install a distribution box safely and correctly. Covers wiring, placement, standards, and expert tips for a compliant setup.</p>
---	--

	<p>Design requirements for low voltage distribution boxes cover NEC, IEC, and safety standards to ensure reliable, compliant electrical installations.</p>
--	--

	<p>(3) Support Fittings Fill. Where one or more luminaire studs or hickey are present in the box, a single volume allowance in accordance with Table 314.16(B) shall be made for each type of fitting based on ...</p>
---	--

	<p>Design requirements for low voltage distribution boxes cover NEC, IEC, and safety standards to ensure reliable, compliant electrical installations.</p>
---	--

	<p>Subpart D—Building Design Requirements—Electric Systems and Equipment § 434.401 Electrical power and lighting systems. Electrical power and lighting systems, other than those systems or ...</p>
---	--

Contact Us

For more information, pricing, or custom energy solutions, please contact us:

Website: <https://www.gdroofing.co.za>

Email: sales@gdroofing.co.za

Phone: +27 72 418 9365

Address: 22 Electron Avenue, Isando, Johannesburg, 1600, South Africa

This document is for informational purposes only. Specifications subject to change without notice.

