

Requirements for Armored Cable Lead-out Trays



Overview

Cable Types: Only use conductors rated for open-air environments, such as Tray Rated (Type TC) or Metal-Clad (Type MC) cables. **Clearances:** Maintain at least 12 inches of vertical clearance above trays for installation and maintenance access (2026 NEC update). This is a description of how to select, install, and support these metal or plastic frames, on which electrical wires are installed. You should consider it as a series of instructions that make the buildings resistant to. Recognize electrical cable tray misuse that can lead to electric shock and arc-flash/blast events and fires caused by overheating. The use and installation of cable trays is covered by legally enforceable OSHA regulations in 29 CFR 1910. 305(a)(3), or comparable standards promulgated by States. Is your cable tray system optimized for safety, dependability, space and cost savings?

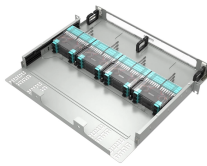
Cable tray (or cable ladder) systems are a popular alternative to electrical conduit systems, as they have an outstanding record for dependable service, design flexibility and cost savings in commercial and. NEC Article 392 outlines the key rules for installing and maintaining industrial cable tray systems.

305(a)(3) and within various provisions of the National Electric Code (NEC).

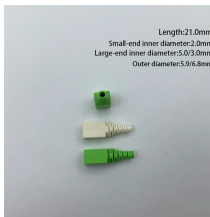
Requirements for Armored Cable Lead-out Trays



Specifies requirements for metal cable trays and associated fittings designed for use in accordance with the rules of Canadian Electrical Code, Part I and the National Electrical Code®



These requirements outline guidelines for installation, support placement, and material selection. Adhering to such standards prevents system failures and enhances operational efficiency.



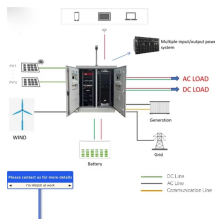
Core rules for selecting, installing, grounding, and filling cable trays—clearances, materials, separation, and bonding explained.



This guide for engineers and installers has been developed by ABB as a practical reference regarding cable tray characteristics, installation, and requirements.



Cable tray must be capable of supporting not just the weight of the cable, but also the weight of any equipment or materials attached to the cable tray. Additionally, dynamic environmental elements ...



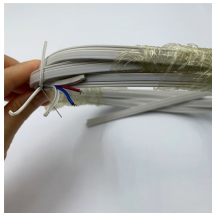
The purpose of this standard is to establish a test protocol and performance criteria to determine the flame propagation tendency of cables in a vertical cable tray.



It includes definitions of key components, dimensional and mechanical requirements, as well as electrical specifications for grounding and continuity. The standard ...



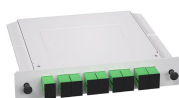
This article explains the main requirements and good practices for cable tray systems, including tray types, materials, loading, supports, bonding, cable selection, and installation details.



A generic guideline developed by the Cable Tray Institute indicates that cable trays should not be filled in excess of 40-50% of the inside area of the tray or of the tray's maximum weight based on the cable ...



Master NEC Article 392 with our comprehensive guide. Learn essential cable tray requirements for installation, grounding, and fill capacity to ensure full electrical compliance.



The use and installation of cable trays are covered by OSHA in 29 CFR 1910.305(a)(3) and within various provisions of the National Electric Code (NEC). When properly planned, installed, and ...



These guidelines will be particularly useful for the design, specification, procurement, installation and maintenance of these systems. Cable ladder systems and cable tray systems are designed for use ...



Cable trays shall be installed as a complete system using fittings or other means to provide adequate cable support and bending radius before the conductors are installed.

Contact Us

For more information, pricing, or custom energy solutions, please contact us:

Website: <https://www.gdroofing.co.za>

Email: sales@gdroofing.co.za

Phone: +27 72 418 9365

Address: 22 Electron Avenue, Isando, Johannesburg, 1600, South Africa

This document is for informational purposes only. Specifications subject to change without notice.

