

Requirements for Circuit Selection in Distribution Boxes



Requirements for Circuit Selection in Distribution Boxes



Evaluate the amperage and voltage requirements of your electrical system, determine the number of branch circuits needed, and select a box with suitable IP ratings for the installation ...



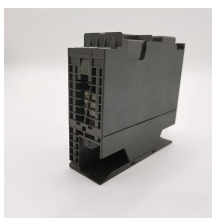
Complete specification guide for outdoor electrical distribution boxes covering NEC Article 312 requirements, NEMA ratings, sizing calculations, and selection criteria for commercial and ...



Switchboards and panelboards must have a short-circuit current rating not less than the available fault current on the line side of the equipment. In other than one- and two-dwelling units, the available fault ...



These updates to the NEC are designed to improve the overall safety and functionality of electrical installations by ensuring that circuit identification is comprehensive, clear, and permanent.



This guide provides information on how to select the appropriate Distribution Box for Electric project. If you have any questions about distribution boxes, please feel free to contact us.



Here you can select the type of mounting of the small distribution board, the mains system, the desired type of connection and the need for surge protection using simple menus or selection fields.



From residential 100-amp panels to massive 600 amp main distribution panels in commercial facilities, this comprehensive guide will help you understand distribution board types, ...



The selection of PV distribution boxes may appear to be a minor detail in electrical design, but it touches on multiple dimensions, including safety, reliability, and operational costs.



Learn how to choose the right distribution board size by assessing load requirements, circuit needs, and future expansions for a safe and efficient setup.



Additionally, the document covers layout requirements and various configurations of distribution panels used in residential, commercial, and industrial settings.

Contact Us

For more information, pricing, or custom energy solutions, please contact us:

Website: <https://www.gdroofing.co.za>

Email: sales@gdroofing.co.za

Phone: +27 72 418 9365

Address: 22 Electron Avenue, Isando, Johannesburg, 1600, South Africa

This document is for informational purposes only. Specifications subject to change without notice.

