

Requirements for Multimode Fiber Laying



Requirements for Multimode Fiber Laying



Compare OM1, OM2, OM3, OM4, and OM5 multimode fiber specs, distances, bandwidth, and applications. Essential guide for data center fiber selection.



Connecting multimode fiber to singlemode fiber may lead to losses of nearly 20 dB at connections. Cable markings, color codes and/or connector types should be chosen to ensure that cable plants ...



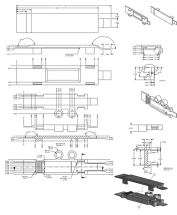
Assuming the design is completed, we're looking at the process of physically installing and completing the network, turning the design into an operating system. This chapter covers preparing for the ...



The FC standard specifies multimode fiber and single-mode fiber as the primary media types. The fiber type recommended depends on the desired distance and data rate. The primary application is for ...



Bend-Insensitive Multimode Fiber Fiber designed and manufactured to withstand a smaller bend radius than nonbend-intensive fiber, enabling lower losses or damage.



In order to effectively pull cable without damaging the fiber, it is necessary to identify the strength material and fiber location within the cable. Then, use the method of attachment that pulls most ...



When evaluating fiber type, consider not only current speed requirements but also the long-term bandwidth roadmap and compatibility with transceivers. Multimode fiber is best suited for ...



Learn the different fiber optic cable installation requirements with our expert guide to ensure optimal performance and durability in your network.



This Applications Engineering Note (AE Note) discusses the criteria for properly selecting the optimal multimode fiber (MMF) for enterprise applications. This AE Note classifies multimode fiber according ...



This section aims to compare single mode fiber optic cable with multimode fiber optic cable, highlighting variations in transmission distance, bandwidth capacity, cost, and installation requirements.

Contact Us

For more information, pricing, or custom energy solutions, please contact us:

Website: <https://www.gdroofing.co.za>

Email: sales@gdroofing.co.za

Phone: +27 72 418 9365

Address: 22 Electron Avenue, Isando, Johannesburg, 1600, South Africa

This document is for informational purposes only. Specifications subject to change without notice.

