

Requirements for cable tray wires entering the distribution box



Overview

(i) Conductors entering cutout boxes, cabinets, or fittings shall be protected from abrasion, and openings through which conductors enter shall be effectively closed. Cable trays can provide a safe component of a power, low voltage control, data or telecommunications wiring distribution system. Cables in trays can be easy to mark, find, and remove. Their flexibility makes cable trays a good choice for installation situations that require upgrading. This article explains the main requirements and good practices for cable tray systems, including tray types, materials, loading, supports, bonding, cable selection, and installation details. The content is written to be SEO-friendly and compatible with Yoast SEO for WordPress. (ii) Unused openings in cabinets, boxes, and fittings shall be effectively. en completely installed, without damage either to conductors or structural system use maintain spacing or to keep cables in place when the tray is ect the minimum bend radius for cables as they exit the bottom of the cable tray. All illustrations, descriptions and technical information included in this document are provided as indications and can cable trays are equivalent. The mechanical and electrical characteristics, tests, certifications, overall quality management,

recommendations mentioned.

Requirements for cable tray wires entering the distribution box



As with any electrical equipment, cable trays and the wiring contained in the trays must be listed, labeled or otherwise approved, pursuant to the requirements of 29 CFR § 1910.303(a).



Cables and conductors must be secured to the cable tray at intervals according to installation instructions. For non-horizontal runs, cables should be fastened securely to transverse ...



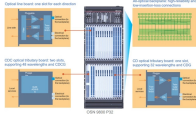
This document deals with cables trays, cables and connector installation and segregation, cable trays earthing and E.M.C. directives. These rules shall be applied in the cabling engineering workflow for ...



This document provides a method statement for installing cable trays or trunking. It outlines responsibilities for the project manager, construction manager, site ...



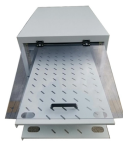
Specifies requirements for metal cable trays and associated fittings designed for use in accordance with the rules of Canadian Electrical Code, Part I and the National Electrical Code®



(i) Conductors entering cutout boxes, cabinets, or fittings shall be protected from abrasion, and openings through which conductors enter shall be effectively closed.



This article explains the main requirements and good practices for cable tray systems, including tray types, materials, loading, supports, bonding, cable selection, and installation details.



Electrical safety requirements, including the types of energized work permitted, approval process for energized work, and Personal Protective Equipment (PPE), applicable to the design, installation, and ...



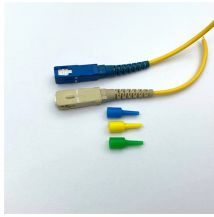
Provide all materials and labor for the installation of a cable tray system for communications infrastructure. This section includes requirements for providing a cable tray system for ...



It provides rules for acceptable wiring methods that can be installed in cable trays, including conditions for use. It addresses uses permitted and not permitted for cable trays.



The work shall include materials, equipment and apparatus not specifically mentioned herein or noted on the plans but which are necessary to make a complete working ANSI/TIA/EIA and ISO/IEC compliant ...



Cable tray installed in a hazardous location must contain only those cables that are appropriate for this type of environment as defined in Chapter 5 of the NEC.



It provides rules for acceptable wiring methods that can be ...

Contact Us

For more information, pricing, or custom energy solutions, please contact us:

Website: <https://www.gdroofing.co.za>

Email: sales@gdroofing.co.za

Phone: +27 72 418 9365

Address: 22 Electron Avenue, Isando, Johannesburg, 1600, South Africa

This document is for informational purposes only. Specifications subject to change without notice.

