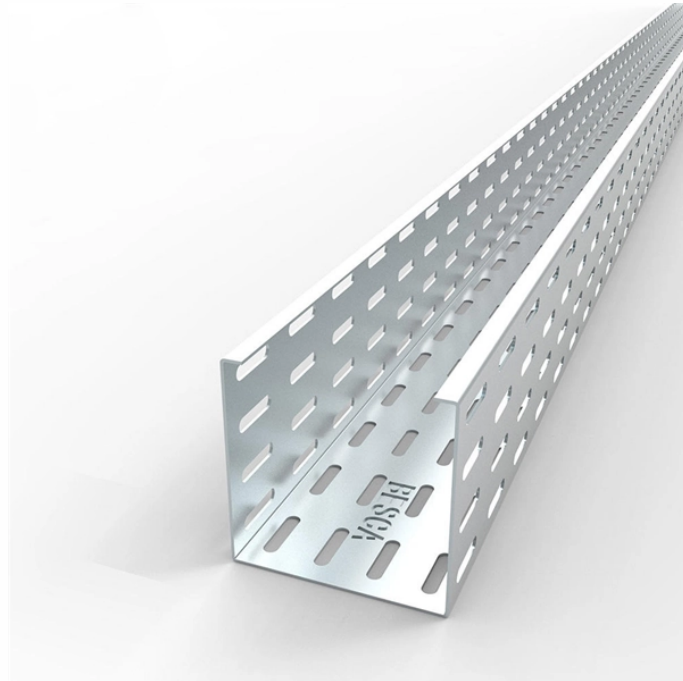


## Requirements for installing clamps on monitoring distribution boxes



## Requirements for installing clamps on monitoring distribution boxes



It requires that preventive maintenance activities be conducted in accordance with applicable PG&E, manufacturer, and engineering requirements. 1.1 This document contains requirements and ...



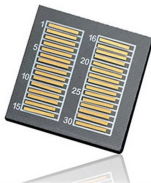
It outlines 4 steps: 1) Pre-installation preparation including reviewing plans and ensuring safety, 2) Mounting panels and running wiring, 3) Installing circuit breakers or fuses, and 4) Terminating ...



Sections 1910.302 through 1910.308 contain design safety standards for electric utilization systems. Included in this category are all electric equipment and installations used to provide electric power ...



In the event of a conflict between EDTI's requirements, and the requirements set in the applicable laws, regulations, bylaws, codes, and directives of other authorities having jurisdiction, the more stringent ...



FOR POLES LARGER THAN APPEARING ON THIS TABLE SEE TRANSMISSION WOOD POLE REINFORCING STANDARDS FOR INSTALLATION REQUIREMENTS IN THE 69KV OVERHEAD ...



I would have thought that regs would require a certified electrician to install these things, but one of our selling points is that they don't require professional installation or any permanent ...



NEC Article 314 establishes requirements for the installation and use of electrical boxes, conduit bodies, fittings, and handhole enclosures.



Sections 1926.402 through 1926.408 contain installation safety requirements for electrical equipment and installations used to provide electric power and light at the jobsite.



101. Code Requirements The company, by law (Title 35A M.R.S.A. Section 2305A), is required to design, construct, operate and maintain its lines and equipment in conformance with the ...



Raceways shall have hangars, slings, clamps or brackets which do not compress, distort, cut, or abrade the raceway. For installations not specifically covered in this table see the Oregon Electrical ...



The installation of customer owned equipment, including current coils and/or voltage monitoring, on or around unmetered conductors or within the DTE sealed section of service equipment is strictly ...

## Contact Us

For more information, pricing, or custom energy solutions, please contact us:

Website: <https://www.gdroofing.co.za>

Email: [sales@gdroofing.co.za](mailto:sales@gdroofing.co.za)

Phone: +27 72 418 9365

Address: 22 Electron Avenue, Isando, Johannesburg, 1600, South Africa

This document is for informational purposes only. Specifications subject to change without notice.

