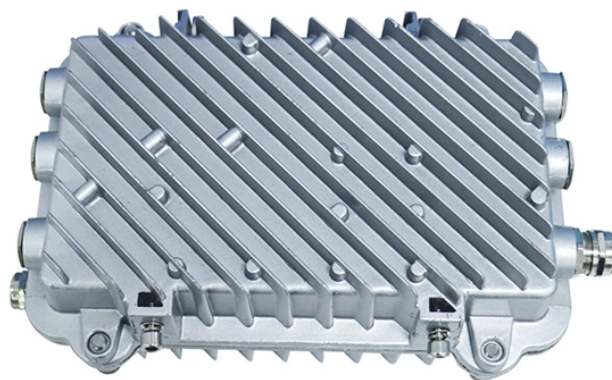


## Requirements for the installation of the main power distribution box on the construction site



## Requirements for the installation of the main power distribution box



It reviews regulations around equipment approval, ground-fault protection, wiring methods, boxes and fittings, panelboards, lockout/tagout procedures, and ...



Proper installation involves site assessment, professional setup, safety inspections, and compliance with local regulations to prevent hazards. Regular maintenance, power usage monitoring, and routine ...



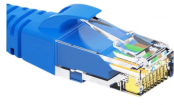
Download the guide to PG& E utility requirements for establishing gas or electric service to new or remodeled customer installations.



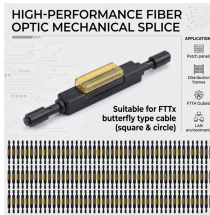
Learn how to install a distribution box safely and correctly. Covers wiring, placement, standards, and expert tips for a compliant setup.



This section highlights OSHA standards, directives (instruction to OSHA staff), and letters of interpretation (official letters of interpretation of the standards) related to power transmission and ...



Sections 1926.402 through 1926.408 contain installation safety requirements for electrical equipment and installations used to provide electric power and light at the jobsite.



Whether you need an industrial portable power station, a complete jobsite power station, or help managing temporary wiring and distribution, this will help you stay compliant with all the ...



Panelboards shall be mounted in cabinets, cutout boxes, or enclosures designed for the purpose and shall be dead front. However, panelboards other than the dead front externally-operable type are ...



The references on this page provide information related to electrical in construction including OSHA's electrical construction regulations, hazard recognition, possible solutions and general resources.



Learn how to set up and maintain reliable temporary electrical systems for construction projects.

## Contact Us

For more information, pricing, or custom energy solutions, please contact us:

Website: <https://www.gdroofing.co.za>

Email: [sales@gdroofing.co.za](mailto:sales@gdroofing.co.za)

Phone: +27 72 418 9365

Address: 22 Electron Avenue, Isando, Johannesburg, 1600, South Africa

This document is for informational purposes only. Specifications subject to change without notice.

