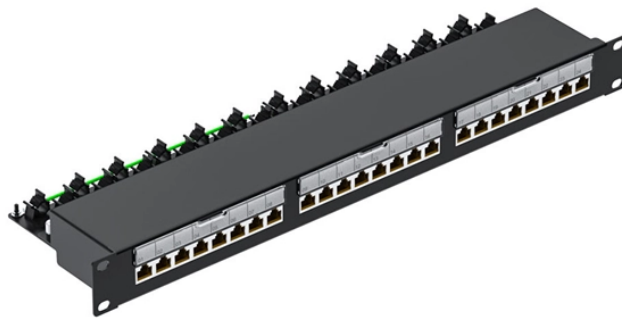


Retail Edge Data Center Outdoor Type



Overview

Thanks to Zella Sense Advanced Monitoring and Automation, you'll have full control and visibility from anywhere. Zella Outback and Zella Max allow you to place your infrastructure right where you need it, perfect for highly distributed set-ups. Our standardised indoor and outdoor solutions. Hyperscale data centers are massive, custom-built facilities owned and operated by a single large company (often a cloud provider or internet giant) to support extremely high-volume computing needs. This proximity reduces latency from 50-100 milliseconds down to single digits, which matters for applications where every millisecond of. Edge computing keeps retail stores running when the cloud can't. Explore use cases, architecture guidance, and a step-by-step playbook for 2026. On any busy Saturday afternoon, a retail store can experience lots of customer traffic.

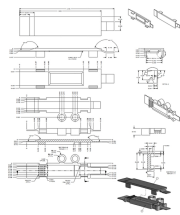
Retail Edge Data Center Outdoor Type



Edge data centers process data close to end users, reducing latency from hundreds of milliseconds to single digits. Learn how edge computing works, ...



Edge data centers process data close to end users, reducing latency from hundreds of milliseconds to single digits. Learn how edge computing works, why AI workloads are driving ...



The objective of the white paper is to define this retail edge solution architecture and help understand design principles of the combined solution from Dell EMC and VMware.



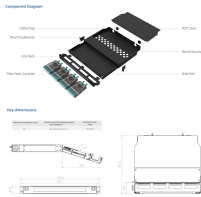
Get flexible and cost-effective rack and containment products and secure integral systems in your data center. Secure voice, video and data electronics using reliable, customized solutions for small ...



Industry taxonomy helps categorize data centers into distinct types based on their ownership and business model, size and scalability, geographic reach (core vs. edge), and other factors. In this ...



Discover practical edge computing strategies that drive ROI with this retail industry white paper from Scale Computing.



Outdoor data centres offer far-reaching advantages, particularly in terms of scalability and flexibility. We outline the essential characteristics of an efficient outdoor data centre.



Dell reports that 75% of enterprise-managed data will be created and processed outside core data centers or clouds, moving toward edge environments. In retail, this means the store itself is ...



Outdoor and containerised data centres that can be placed anywhere - process data right where it's needed, reducing latency and increasing flexibility.



It suits all requirements - a permanent solution, a backup or a temporary data centre. They are protected against fire, fire-fighting water, corrosive gases, vandalism, unauthorised access, ...



RiMatrix Micro Data Centers Edge Standalone Solutions MDC Outdoor Blue e+ Large (5.0kW) plication with Rittal's pre-engineered Edge Air Conditioner (EAC) platform designs. These integrated ...

Contact Us

For more information, pricing, or custom energy solutions, please contact us:

Website: <https://www.gdroofing.co.za>

Email: sales@gdroofing.co.za

Phone: +27 72 418 9365

Address: 22 Electron Avenue, Isando, Johannesburg, 1600, South Africa

This document is for informational purposes only. Specifications subject to change without notice.

