

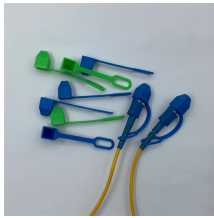
Role of Monitoring Core Switches



Overview

Core switches are the focal point for traffic control between access and distribution switches. They perform a vital function in ensuring the network's reliability and stability because they are in charge of routing data across the network infrastructure in a reliable and timely. Understanding the Backbone of Your Network A core switch in networking serves as the high-capacity backbone, centralizing data flow and ensuring efficient communication between different network segments. Simply put, it's the kingpin that keeps your network humming. The core. A core switch is a high-capacity, high-performance Layer 3 switch positioned at the physical backbone of an enterprise network. Engineered to aggregate massive volumes of data from distribution switches, it provides ultra-low latency and maximum throughput to ensure uninterrupted routing and packet. There are different types of enterprise switches that perform various roles in these layer-based or hierarchical ethernet networks. It is part of the commonly used Network Switch hardware architecture and serves as a port device in the core layer.

Role of Monitoring Core Switches



While edge switches handle user connectivity and routers manage external internet traffic, the core switch acts as the central nervous system bridging your entire local environment.



Understanding the role and function of a core switch is paramount for building and maintaining a robust and efficient network infrastructure. By carefully selecting, configuring, and ...



Owing to the importance of core switches, the quality and performance of the core network switches must be tested. To ensure that the switches can perform tasks of the core layer or collapsed core ...



Core switches play a critical role in managing and directing data efficiently, providing the high throughput and low latency required in complex network environments.



By selecting Core Switch devices that align with specific needs, businesses can achieve high-speed, reliable data forwarding, ensuring efficient network operation. Core Switches also ...



Explore the core switch's role as the backbone of your network. Discover key differences, uses, and insights into layer 3 core switch technology.



Core switches play an integral role in scaling and maintaining network reliability. As the network expands, additional switches and devices can be attached without disrupting the core ...



Discover what a Core Switch is, its pivotal role in network architecture, and how it boosts performance and reliability in your data infrastructure.



Core switches are defined as high-capacity switches located at the top of a cloud data center network, connecting aggregation switches and providing interfaces to wide area networks (WANs).



The core switch functions as the central point of the entire network, forming the high-speed backbone for the organization's data infrastructure. Its primary purpose is to provide an ...

Contact Us

For more information, pricing, or custom energy solutions, please contact us:

Website: <https://www.gdroofing.co.za>

Email: sales@gdroofing.co.za

Phone: +27 72 418 9365

Address: 22 Electron Avenue, Isando, Johannesburg, 1600, South Africa

This document is for informational purposes only. Specifications subject to change without notice.

