

SC interface optical module single-mode single-fiber 20km range



SC interface optical module single-mode single-fiber 20km range



Equipped with a removable **Mounting Plate** inside the enclosure, enabling customized drilling and secure component mounting.

This series of 1×9 optical transceivers provide a 20km transmission distance over single mode fiber at a nominal wavelength of 1310nm. Each 1×9 transceiver module consists of a transmitter section and a ...



Gcabling is a leading fiber optic products manufacturer & supplier. We can supply a wide range of fiber optic products with 20+ years of experience.



Flyin's 1.25G SFP transceiver module is individually tested to be used on a series of switches, routers, servers, network interface card etc. Featuring low power consumption, high speed, this easy to ...



Wuhan Yongxinfeng Technology Co., Ltd. is located in "Wuhan China Optics Valley", surrounded by a good R& D atmosphere. It is a professional manufacturer of "1*9, SFP, SFP+, XFP, QSFP+, ...



This 1.25G SC SFP Module is a high-performance 1.25G SFP fiber module designed for 20km bidirectional data transmission over single-mode fiber (SMF). This SFP optical module supports ...



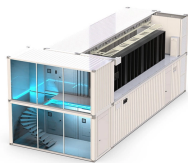
The receiver section uses a PIN receiver and the transmitter uses a 1310 nm FP laser, up to 14dB link budget ensure this module 1000Base-LX Ethernet 20km application.



The single strand BiDi (also called WDM) SFPs equipped with SC connector are available for 20Km range only, but on special order, all other distances can be provided, just like the LC based series ...



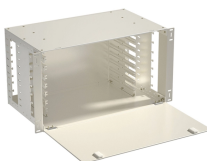
Flyin's 1.25G SFP transceiver module is individually tested to be used on a series of switches, routers, servers, network interface card etc. Featuring low power ...



The receiver section uses a PIN receiver and the transmitter uses a 1310 nm FP ...



1000BASE-BIDI SC TRANSCEIVER: 1.25G SC WDM SFP optical transceiver module supports 1.25Gbps data transmission rate over single mode single fiber cable up to 20 km.



Reliable 1.25G single mode single fiber optical transceiver with SC connector and 20km transmission distance. Ideal for long-distance fiber communication networks.



Buy Solitine 1.25G SFP SC Module (Pair) with 1.25Gbps data rate, 20km range, Tx 1310nm / Rx 1550nm wavelengths, and SC connector. Ideal for Gigabit Ethernet and Fiber Channel applications.



Gcabling is a leading fiber optic products manufacturer & supplier. We can supply a wide range of fiber optic products with 20+ years of experience.

Contact Us

For more information, pricing, or custom energy solutions, please contact us:

Website: <https://www.gdroofing.co.za>

Email: sales@gdroofing.co.za

Phone: +27 72 418 9365

Address: 22 Electron Avenue, Isando, Johannesburg, 1600, South Africa

This document is for informational purposes only. Specifications subject to change without notice.

