

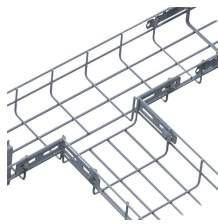
SFP optical module copper cable fiber optic



SFP optical module copper cable fiber optic



Explore Copper SFP vs. Fiber SFP differences, performance, compatibility, and cost. Learn how to choose the right SFP module for home labs, data centers, and PoE networks.



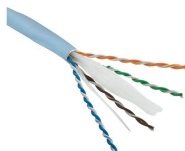
Two common options are Direct Attach Copper (DAC) cables and Small Form-factor Pluggable (SFP) optical modules. Each has its own strengths, limitations, and ideal use cases. This ...



What is a Copper and Fiber SFP? Copper SFP uses electrical signals over copper cables, while fiber SFP uses light signals over fiber optic cables. The decision between copper and fiber ...



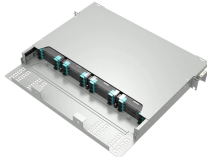
Compare Copper SFP vs Fiber SFP Modules to choose the best for your network. Understand differences in speed, distance, cost, and performance for optimal connections.



Commonly, 850nm SFP can reach up to 550 meters with multimode fiber optics, and the 1550nm SFP supports up to a maximum of 160km via single mode fiber cables. On the other hand, ...



Small Form-factor Pluggable (SFP) is a compact, hot-pluggable ...



SFP (Small Form-factor Pluggable) is a compact, hot-pluggable network interface module used to connect network devices (switches, routers, firewalls) to fiber optic or copper cables.



SFP modules seamlessly connect fiber optics and copper cables, offering versatile solutions for data transmission over various distances and environments.



Small Form-factor Pluggable (SFP) is a compact, hot-pluggable network interface module format used for both telecommunication and data communications applications. An SFP interface on networking ...



In this guide, we break down the differences between these modules and help you make the best decision for your infrastructure—whether you're upgrading a legacy system, increasing the ...



When it comes to networking, the two most common types of SFP modules are Copper SFP and Fiber SFP. Each has its own advantages and use cases, making it important to understand which one ...

Contact Us

For more information, pricing, or custom energy solutions, please contact us:

Website: <https://www.gdroofing.co.za>

Email: sales@gdroofing.co.za

Phone: +27 72 418 9365

Address: 22 Electron Avenue, Isando, Johannesburg, 1600, South Africa

This document is for informational purposes only. Specifications subject to change without notice.

