

Safe and durable distribution box terminal box



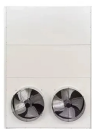
Safe and durable distribution box terminal box



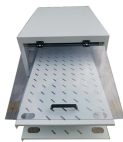
EXEB3 waterproof IP66 distribution box ensures safe, weatherproof protection for electrical systems in harsh indoor and outdoor environments.



Introduction For procurement professionals, electrical contractors, and project managers, choosing the right Distribution Box (DB Box) is a critical decision that directly impacts system safety, reliability, and ...



Introduction Electrical control panels and distribution boxes are the backbone of modern electrical systems. From powering homes and industrial facilities to supporting medium-voltage ...



A distribution box enclosure is a protective housing designed to safely organize and protect electrical distribution components such as circuit breakers, wiring terminals, fuses, switches, and monitoring ...



What Are Plastic Distribution Boxes? Plastic distribution boxes are enclosures used to house and protect electrical connections, terminals, and other vital components. These boxes are designed to maintain ...



Discover our selection of Junction & Terminal Boxes. Our product experts are here to assist you. Get in touch with our team now



Explore reliable FTTH terminal boxes for secure fiber termination and distribution. ...



Explore reliable FTTH terminal boxes for secure fiber termination and distribution. Wall-mounted design, robust build, for home and industrial optical networks.



Secure and organize electrical connections with ETA Enclosures" Terminal and Junction Boxes. Durable, efficient solutions for industrial systems.



Learn more about the different ranges of flexible and durable increased safety terminal boxes, junction boxes, and splice boxes from Pepperl+Fuchs.



Find high-quality distribution boxes from GEYA. Our durable enclosures ensure safe and organized electrical installations.

Contact Us

For more information, pricing, or custom energy solutions, please contact us:

Website: <https://www.gdroofing.co.za>

Email: sales@gdroofing.co.za

Phone: +27 72 418 9365

Address: 22 Electron Avenue, Isando, Johannesburg, 1600, South Africa

This document is for informational purposes only. Specifications subject to change without notice.

