

Saudi Arabian Raman Amplifier QSFP-DD



Saudi Arabian Raman Amplifier QSFP-DD



The 4x 100G QSFP-DD FR1 optical transceiver that provides 4 parallel 100GE links over 4 single mode fiber (SMF) pairs via its MPO-12 connector. Each fiber pair link is compliant to 100GBASE-FR1 and ...



Name Hybrid Raman Amplifier Module Features Automatic gain and tilt control Variable gain setting Flatten gain shape Laser safety with automatic pump shutdown Applications 40G/100G transmission ...



The QSFP-DD OLS itself is a pluggable module that integrates two ...



QSFP-DD form factor EDFA is a pluggable dual EDFA product designed for C-band 8 channels DWDM amplification. It is designed to be compatible with QSFP-DD MSA on mechanical and electrical ...



As a leading solution in high-speed applications, QSFP-DD transceivers are often compared with other modules such as QSFP56, QSFP112, OSFP, and CFP2. So what are the ...



This article will introduce the next generation optical module in detail, QSFP-DD, also known as quad small factor pluggable, and this article will also introduce the difference between ...



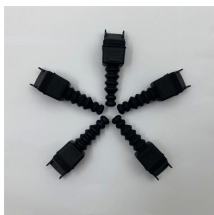
MSA and TAA 400GBase-Open ULH Coherent QSFP-DD Transceiver (SMF, 1528.77nm to 1567.13nm, 2400km, LC, DOM) Add to quote QDD4-400GB-DR4-AO MSA and TAA 400GBase-DR4 QSFP-DD ...



QSFP-DD is the most widely adopted form factor for 400G, with great potential for 800G. While QSFP-DD prioritizes backward compatibility, OSFP's larger surface ...



July 11, 2019 - QSFP-DD Hardware Specification for QSFP DOUBLE DENSITY 8X PLUGGABLE TRANSCEIVER - Rev 5.0 May 8, 2019 - Common Management Interface Specification - Rev 4.0



The QSFP-DD OLS itself is a pluggable module that integrates two variable-gain amplifiers (a pre-amplifier and a booster amplifier) to amplify both the up and down fiber streams.



QSFP-DD is the most widely adopted form factor for 400G, with great potential for 800G. While QSFP-DD prioritizes backward compatibility, OSFP's larger surface area enables higher thermal efficiency ...



Our products are compatible with all major brands. This QSFP-DD dual pluggable EDFA booster amplifier offers a optical input range and provides a +20dB nominal gain to a C-Band DWDM link.

Contact Us

For more information, pricing, or custom energy solutions, please contact us:

Website: <https://www.gdroofing.co.za>

Email: sales@gdroofing.co.za

Phone: +27 72 418 9365

Address: 22 Electron Avenue, Isando, Johannesburg, 1600, South Africa

This document is for informational purposes only. Specifications subject to change without notice.

