


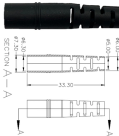
## Schematic diagram of explosion-proof socket in distribution box




## Schematic diagram of explosion-proof socket in distribution box




Box type product adopts high quality steel plate welding structure; the main cavity and auxiliary cavity are of up and down structure; wall type installation; bottom inlet, front operation and back overhauling.




The external dimensions of the distribution cabinet can be determined according to the electrical schematic diagram or technical data provided by the user and the corresponding explosion-proof ...



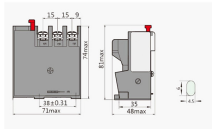
Installation & Maintenance Instructions Junction Box Enclosures FM, CSA, ATEX, IECEx Certified.



The document provides specifications for the BXM (D)51 Series Explosion-proof Illumination and Power Distribution Boxes, designed for use in hazardous environments (Zones 1, 2, 21, and 22). It details ...



BX51 Explosion-Proof Distribution Box delivers safe power control and distribution in explosive-prone environments.



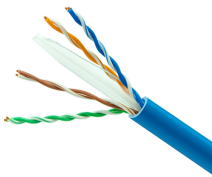
Equipped with specialized hinge structure, which can prevent the flameproof joints from damage when opening and closing the panels, and greatly prolong the service life of box. The boxes can be ...



The plug and the socket are made into an electrical interlocking structure. After the plug is inserted, the rotating sleeve on the plug rotates clockwise by a certain angle, and the switch in the socket is ...



FIG. 1 is a schematic diagram of a three-dimensional structure of an explosion-proof flame-retardant distribution box provided in an embodiment of the present invention.



Plugs and sockets with rated voltages above 50 V must have an earth contact. The sockets have a keyway and the plugs have a nose (key), which engages in this.



1. Please specify the number and size of cable entries and sides of the enclosure to be fitted. 2. Electrical schematic diagram shall be provided by user. Photo switch, AC contactor, thermal relay or ...

## Contact Us

For more information, pricing, or custom energy solutions, please contact us:

Website: <https://www.gdroofing.co.za>

Email: [sales@gdroofing.co.za](mailto:sales@gdroofing.co.za)

Phone: +27 72 418 9365

Address: 22 Electron Avenue, Isando, Johannesburg, 1600, South Africa

This document is for informational purposes only. Specifications subject to change without notice.

