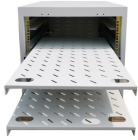


Secondary distribution box shut down



Secondary distribution box shut down



So any new electrical installations require a single main breaker per panel to shut off all power, but an existing multiple main disconnect panels from years ago are not illegal.



Section 230.70 generally requires a means of disconnect for all ungrounded service conductors serving a building or structure. Sections 230.70 ...



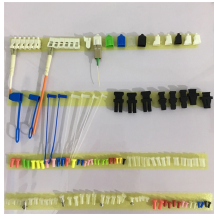
Section 230.70 generally requires a means of disconnect for all ungrounded service conductors serving a building or structure. Sections 230.70 (A) (1) and (2) get more specific and ...



Further, the loads must be shut down to perform maintenance on the system. This arrangement is most used where the need for low first-cost, simplicity, and space economy outweigh the need for ...



230.71 Maximum Number of Disconnects. Code Change Summary: Revised code language on allowable service configurations. The NEC ® has permitted up to six service disconnects in a single ...



The purpose is to give first responders a clear, accessible way to shut down power from outside during an emergency like a fire. This emergency disconnect must be located in a readily accessible outdoor ...



Executive summary—What is the NECT six disconnect rule? Generally, two locations within the power distribution system are important and play a unique role for the electrical workers on the field, service ...



In this guide, we'll break down everything you need to know about NEC guidelines about service disconnect locations to stay compliant and improve electrical safety.



If by distribution panel you mean main distribution panel then the only time you need a main breaker is when you have more than six handles. If this is a sub panel then the only time a main is ...



Since there are no feeder interconnections, a fault will interrupt all downstream customers until it is repaired. This configuration is called a radial system and is common for low-density rural ...



Electricity in the states runs at the same frequency as the human heart so all it takes is a nice shock to fuck up the timing of your heart beat and kill you. My city essentially doesn't allow any ...

Contact Us

For more information, pricing, or custom energy solutions, please contact us:

Website: <https://www.gdroofing.co.za>

Email: sales@gdroofing.co.za

Phone: +27 72 418 9365

Address: 22 Electron Avenue, Isando, Johannesburg, 1600, South Africa

This document is for informational purposes only. Specifications subject to change without notice.

